



T&S BRASS AND BRONZE WORKS, INC.

2 Saddleback Cove / P.O. Box 1088
Travelers Rest, SC 29690

Model No.

B-0192

Item No.

Travelers Rest, SC: 800-476-4103 • Simi Valley, CA: 800-423-0150 • Fax: 864-834-3518 • www.tsbrass.com

This Space for Architect/Engineer Approval

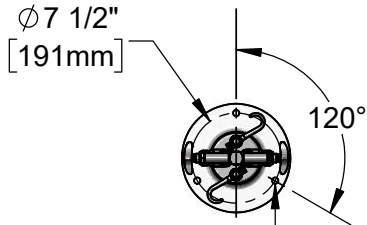
Job Name _____ Date _____

Model Specified _____ Quantity _____

Customer/Wholesaler _____

Contractor _____

Architect/Engineer _____



(3) Bolt Holes
for ϕ 1/2" x 3"
Hex Head Bolts &
Expansion Shields
(Included)

EB-0107-035
High Flow Angled
Spray Valve
(Blue)

EB-0104-H
Flexible Stainless
Steel Hose w/
Blue Grip
Handle

Pot Filling
Hook Nozzle

Items Not Shown
For Clarity

Swivel Joint

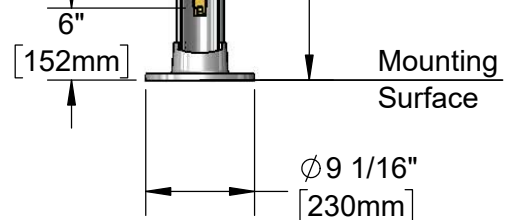
(2) 002852-40
Hook & Bolt

EB-0068-H
Flexible Stainless
Steel Hose w/ Blue
Grip Handle

1/2" Check Valves

9 1/2"
[242mm]
Appx. When
Hose is Hanging

9 1/2"
[242mm]
Appx. When
Hose is Hanging



Rough-In Requirement:
Assembly Connects to a 1/2" Pipe Nipples Roughed in
From Floor on 2" Centers to a Height of 6"

Product Specifications:
Kettle Kaddy Combination Kettle Filler Spray Stanchion, Control Valves,
104" and 68" Flexible Stainless Steel Hoses, Hook Nozzle, High Flow Spray
Valve & (2) 1/2" Check Valves

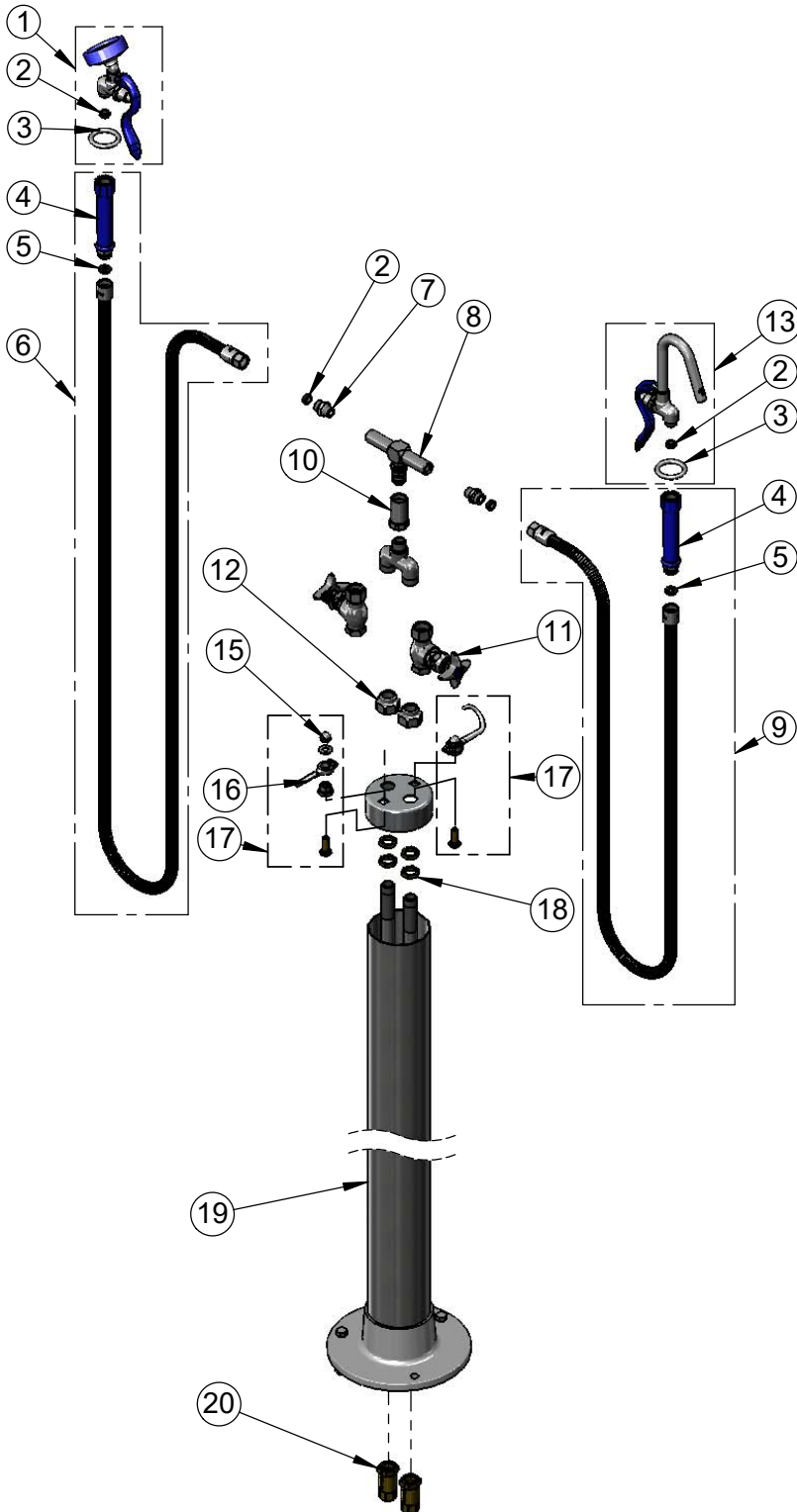
Product Compliance:
ASME A112.18.1 / CSA B125.1
NSF 61 - Section 9
NSF 372 (Low Lead Content)
EPAct 2005 Non-Compliant (PRSV)



T&S BRASS AND BRONZE WORKS, INC.
 2 Saddleback Cove / P.O. Box 1088
 Travelers Rest, SC 29690

Model No.
B-0192
 Item No.

Travelers Rest, SC: 800-476-4103 • Simi Valley, CA: 800-423-0150 • Fax: 864-834-3518 • www.tsbrass.com



| ITEM NO. | SALES NO. | DESCRIPTION |
|----------|-------------|--|
| 1 | EB-0107-035 | High Flow Angled Spray Valve (Blue) |
| 2 | 010476-45 | #27 Washer |
| 3 | 000907-45 | Spray Valve Hold Down Ring |
| 4 | 011482-40 | Blue Grip Handle |
| 5 | 001014-45 | Washer, B-0100 Hose Barrel |
| 6 | EB-0104-H | 104" Flexible Stainless Steel Hose w/ Blue Grip Handle |
| 7 | 053A | Adapter, 3/8" NPT Male |
| 8 | 000592-25 | Swivel Tee |
| 9 | EB-0068-H | 68" Flexible Stainless Steel Hose w/ Blue |
| 10 | 000592-25 | Pre-Rinse Swivel Body |
| 11 | 0RK3 | Shut-Off Control Valve |
| 12 | 001457-40 | Cap |
| 13 | 012952-40 | Spray Valve & Hook Nozzle |
| 14 | 011455-45 | Blue Handle Ring |
| 15 | 000950-25 | Acorn Nut |
| 16 | 004R | Finger Hook |
| 17 | 002852-40 | Finger Hook & Bolt |
| 18 | 002954-45 | Shank Lock Nut |
| 19 | 002847-40 | B-0190 Stanchion |
| 20 | B-CVH1-2 | 1/2" Check Valve |

Product Specifications:
 Kettle Kaddy Combination Kettle Filler Spray Stanchion, Control Valves,
 104" and 68" Flexible Stainless Steel Hoses, Hook Nozzle, High Flow Spray
 Valve & (2) 1/2" Check Valves

Product Compliance:
 ASME A112.18.1 / CSA B125.1
 NSF 61 - Section 9
 NSF 372 (Low Lead Content)
 EPA Act 2005 Non-Compliant (PRSV)