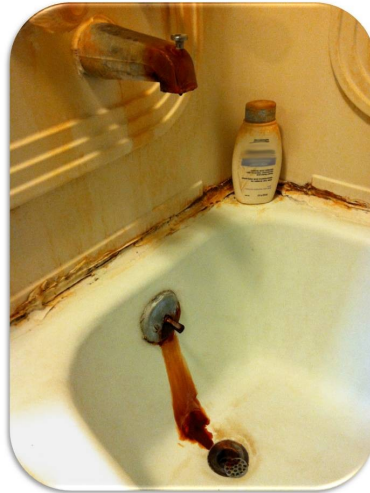
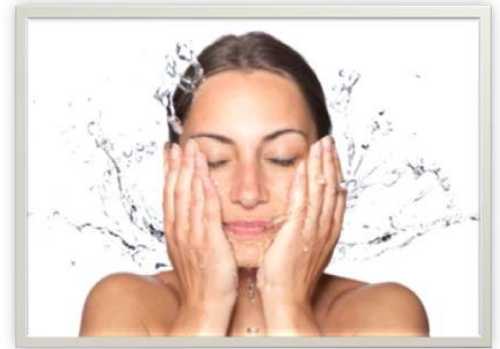




- Reduces Sulfur
- Reduces Iron
- Reduces Manganese
- Filtration down to 3 microns

## KLX2E Series

Catalytic Filter System  
With Electronic Timer



- **No Chemicals.** A chemical regenerant is not required.
- **No In-Line Venturi to Plug or Adjust.**
- **No Air Compressor.** The noise and expense of compressors are eliminated.
- **No Air Release Valve Required.**

- **Small Footprint.** Small footprint allows for ease of installation.
- **Rugged Mechanical Piston Valve.** No solenoids or flapper valves to stick.
- **Full Flow Bypass Valve.** Simple to use valve allows you to bypass the unit for lawn sprinkling or during filter maintenance.
- **Light Weight.** Catalytic filter media weight 66 lb/cu. ft.

Model Number	Media cu. ft.	Backwash Rate Required @ 40 psi	*Flow Rate (gpm)		Overall Dimensions			Pipe Size
			Service	Peak	L	W	H	
KLX2E-10	1.0	7 GPM	3	5	12"	15"	64"	1"
KLX2E-15	1.5	9 GPM	4	6	12"	15"	58"	
KLX2E-20	2.0	10 GPM	5	8	13"	15"	64"	
KLX2E-30	3.0	16 GPM	8	13	16"	16"	75"	

NOTE: Residential KLX2E Filter Systems are not designed for continuous flow applications. (Example: Ground water heat pumps, lawn irrigation, etc.) Specifications subject to change without notice. \*Flow rates listed are dependant upon contaminant level. Higher contaminant levels may require greater contact time.

