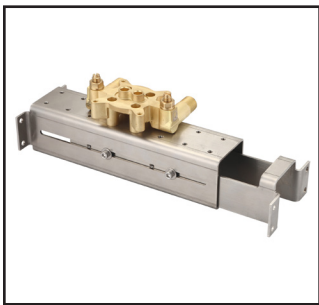




Pioneer Faucets
STYLE THAT WORKS

4400B
Valve Series



Single Handle Free Standing Tub Filler Valve Set

- Metal Construction
- Floor Joist Mounting Kit
- 1/2" CC/MNPT type connections
- Sturdy Mounting Bracket Included with Valve
- Expandable mounting brackets for joists between 12" and 24" apart
- Integral Stop Assemblies with Back Flow Preventers

Pioneer products are engineered and manufactured to meet the following standards and codes :

Note: 4400B and 4410B valves can be tested when test cap installed with air (150 PSI) or water (150 PSI).

Note: Cartridge operational at pressures 20 PSI to 100 PSI.

