



OLYMPIA FAUCETS, INC.
3325 S. Garfield Ave.
Commerce, CA 90040
(888) 772-7701
www.olympi faucet s.com

INSTALLATION

Tools:



Adjustable Wrench



Plumbers Putty



Teflon Tape



Rags

Model Number: K-4160H, K-4161H

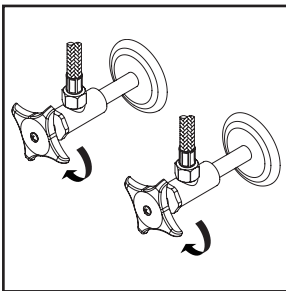


Warnings and Notes:

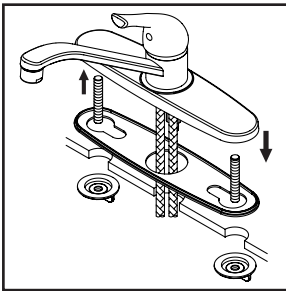
Check with local plumbing code requirements before installation.
This product should be installed by a local listed plumber.
Do not use plumbers putty on threads.

Installation Steps:

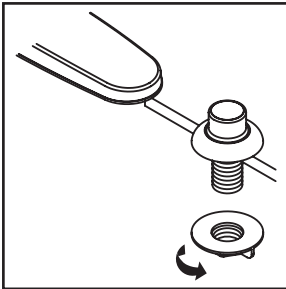
Single Handle Kitchen Faucet



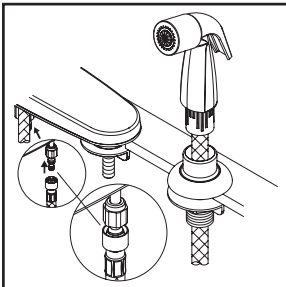
(1) Shut off the water supply. Remove old faucet. Clean mounting surface in preparation for new faucet.



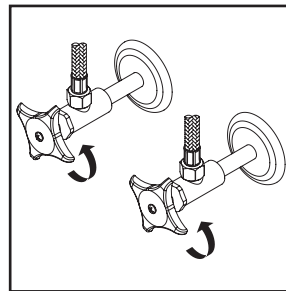
(2) Apply adequate plumbers putty along the boundary of base gasket. Thread mounting bolts to the bottom of faucet. Align faucet with mounting holes and place faucet on the sink, thread locknut onto mounting bolts from underneath the sink, hand tighten locknuts. Go to step (5) if faucet is without side spray.



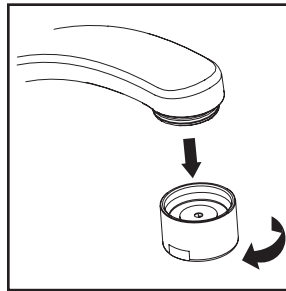
(3) Place side spray holder on mounting hole. Tighten locknut from underneath the sink to secure the side spray holder.



(4) Guide the side spray hose through the side spray holder. Insert the side spray hose quick connect adapter into the faucet outlet hose end, push until a "click" is heard. Pull side spray hose downward to test engagement.



(5) Connect hot and cold inlet supply hoses to supply stops. For 1/2" connection; use 3/8" male to 1/2" female adapter for installation. Adapters are optional and not provided with the faucet. Turn on both sides of the supply stop.

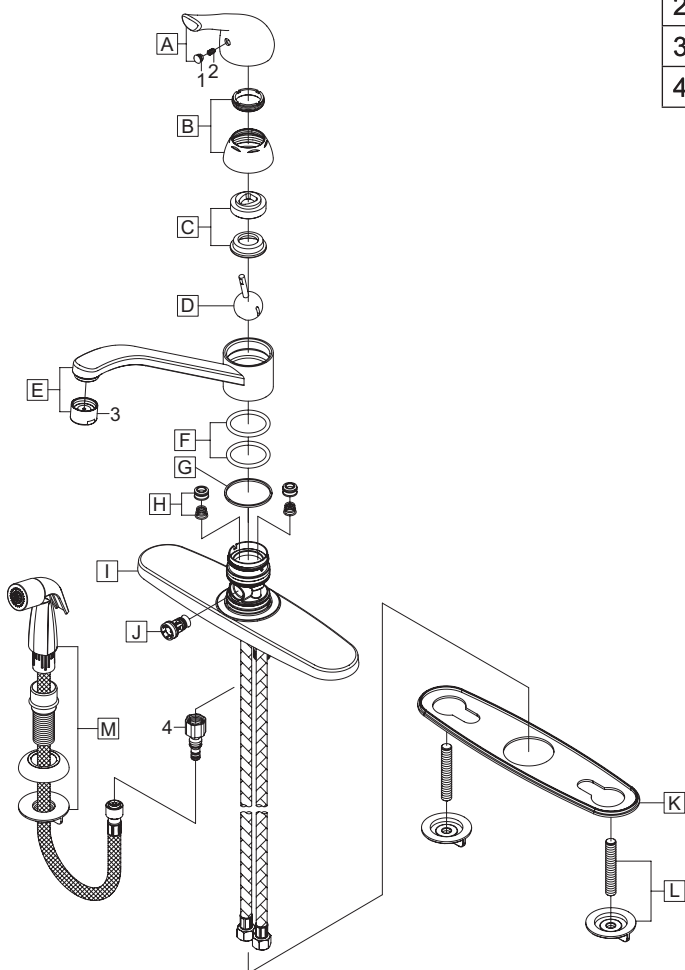


(6) Important: After installation is complete, remove the aerator. Turn on the water and allow both hot and cold water to run for at least one minute each. While water is running, check for leaks. Turn off the water and replace the aerator when finished.

Exploded Drawing:

* Note: Please specify finish/color when ordering.

	ITEM #	DESCRIPTION
A	OP-190001*	Metal Lever Handle
B	OP-490003*	Cap & Adjusting Ring
C	OP-490004	Cam and Washer
D	OP-390001	Stainless Steel Ball
E	OP-220001*	'D' Style Spout
F	OP-420001	O-Rings
G	OP-420002	Gasket
H	OP-490041	Springs and Seats
I	OP-420003*	Deck Plate
J	OP-420005	Diverter Piston (For K-4161H)
K	OP-420004	Base Gasket
L	OP-520003	Mounting Bolts & Nuts
M	OP-420078*	Side Spray Assembly (For K-4161H)
1	OP-490002	Hot & Cold Indicator
2	OP-490043	Allen Screw
3	OP-490035*	1.5 GPM Aerator
4	OP-420083	Quick Connect Adapter



OLYMPIA

For more care information or trouble shooting inquiries
about your Olympia product, Please call:
OLYMPIA FAUCETS, INC. (888) 772-7701
Monday-Friday 8 AM to 8 PM EST (5 AM to 5 PM PST)
www.olympiafaucets.com