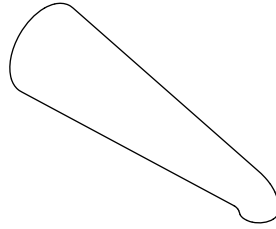


### INSTALLATION INSTRUCTIONS

---



P24814

### INSTALLATION INSTRUCTIONS

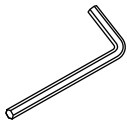
#### THANK YOU FOR CHOOSING KALLISTA

We appreciate your commitment to KALLISTA quality products. Please take a moment to review this manual before you install your KALLISTA product. If you encounter any installation or performance problems, please do not hesitate to contact us at the phone number listed at the bottom of the page.

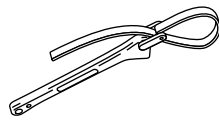
#### BEFORE YOU BEGIN

- Shut off the water supply.
- Observe all local plumbing and building codes.
- If needed, complete the finished wall before beginning this installation.
- KALLISTA reserves the right to make revisions in the design of products without notice, as specified in the Price Book.

#### TOOLS AND MATERIALS



1/8" Hex Wrench



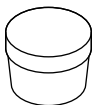
Strap Wrench



Rags

Plus:

- 1-1/4" copper tube or 1/2" nipple
- Emery paper



Plumbers Putty



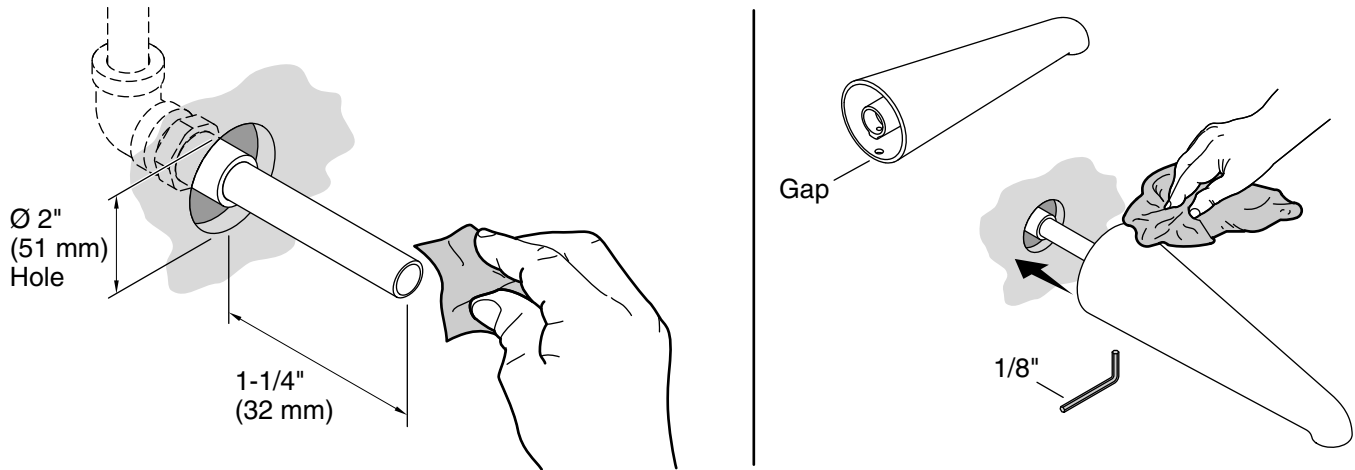
Sealant Tape



Silicone Sealant

## INSTALLATION INSTRUCTIONS

## 1. SPLIT-FIT SPOUT INSTALLATION

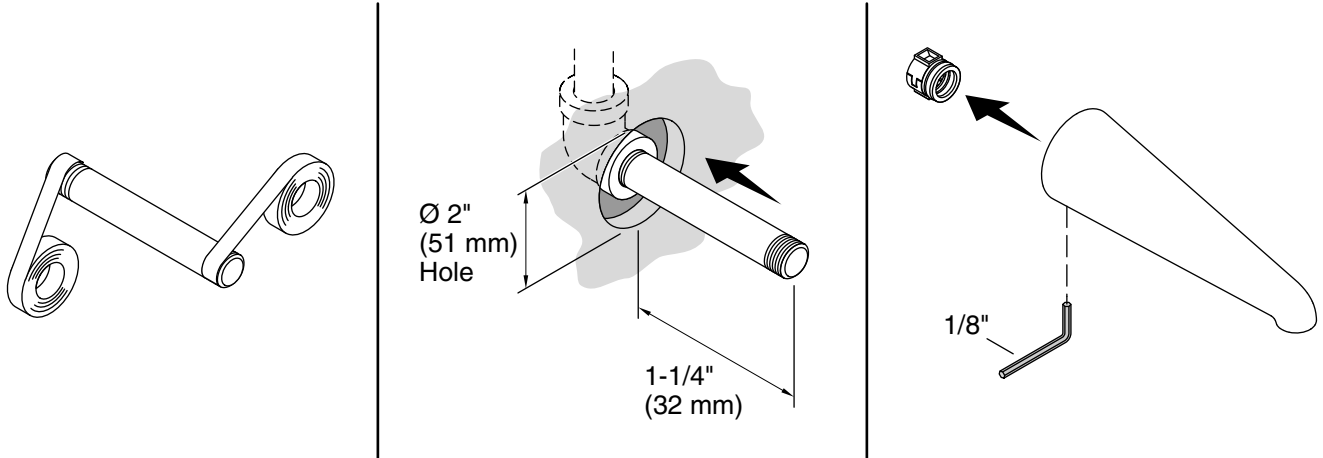


**NOTE:** Tubes extending less than 1-1/4" (32 mm) will leak.

- Install the tube.
- Remove burrs with emery paper.
- Apply plumbers putty or sealant to the spout. Leave a small gap.
- Loosen the setscrew and slide the spout against the wall.
- Firmly tighten the setscrew.
- Remove the excess sealant.

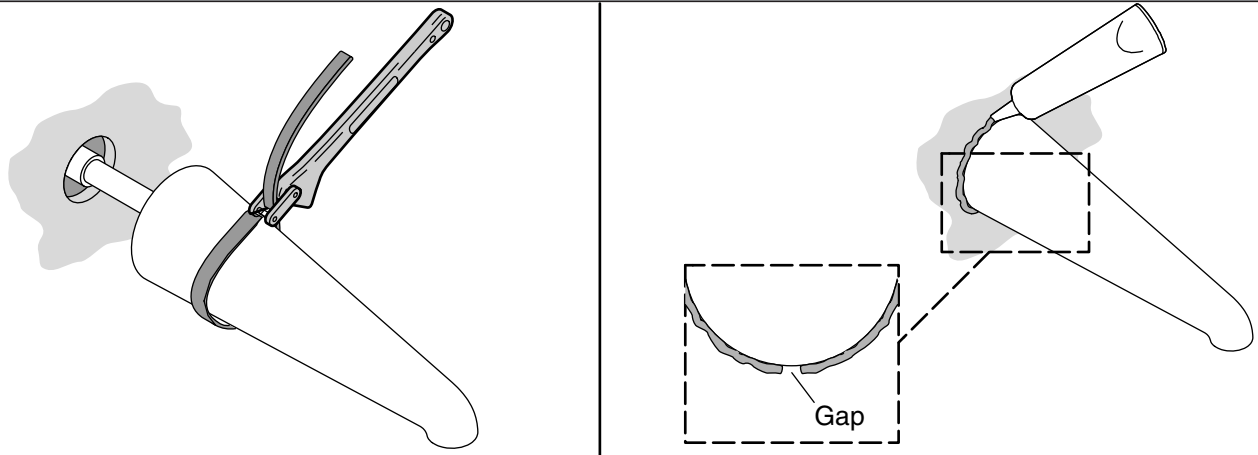
### INSTALLATION INSTRUCTIONS

#### 2. THREADED SPOUT INSTALLATION



- Apply sealant tape to the 1/2" nipple.
- Install the 1/2" nipple.
- Remove the slip-fit assembly.

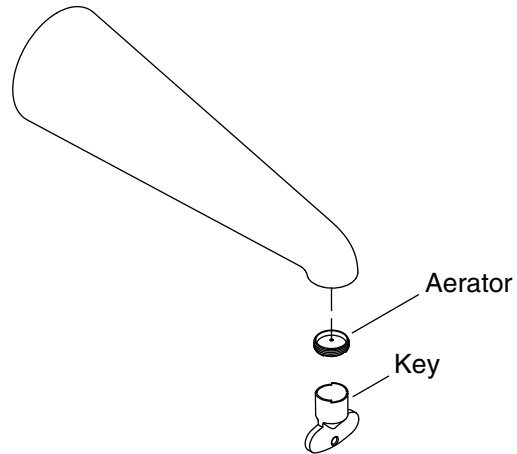
#### 3. THREADED SPOUT INSTALLATION



- Carefully tighten the spout using a strap wrench.
- Apply plumbers putty or sealant. Leave a small gap.
- Remove the excess sealant.

## INSTALLATION INSTRUCTIONS

## 4. INSTALLATION COMPLETION



- Turn on the water supplies and check the installation for leaks.
- Repair as needed.
- Remove the aerator with the aerator key.
- Open the valves and run water through the spout for a minute to remove any debris.
- Turn off the valves and reinstall the aerator.
- Keep the aerator key for future use.