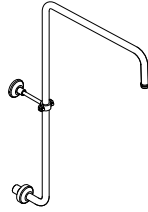


INSTALLATION INSTRUCTIONS



P21441

INSTALLATION INSTRUCTIONS

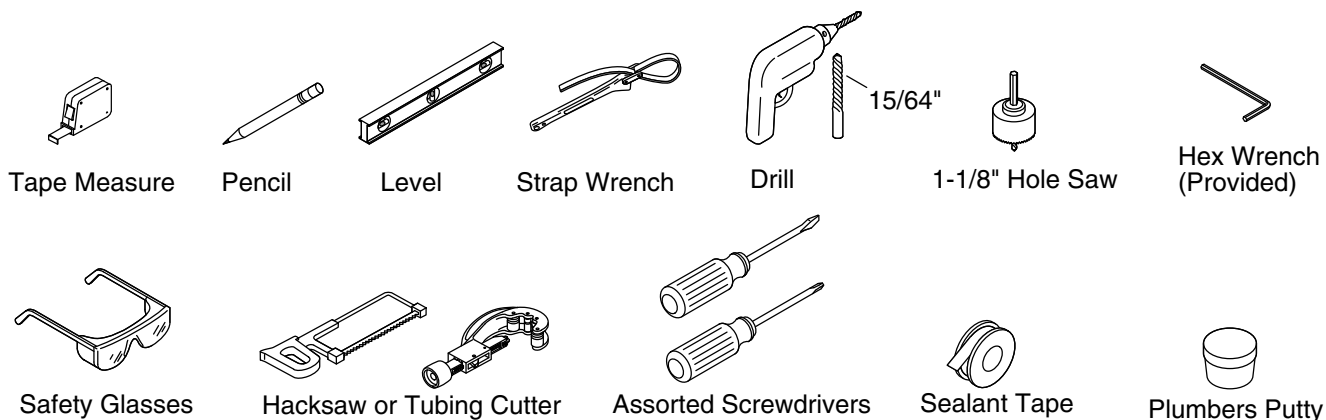
THANK YOU FOR CHOOSING KALLISTA

We appreciate your commitment to KALLISTA quality products. Please take a moment to review this manual before you install your KALLISTA product. If you encounter any installation or performance problems, please do not hesitate to contact us at the phone number listed at the bottom of the page.

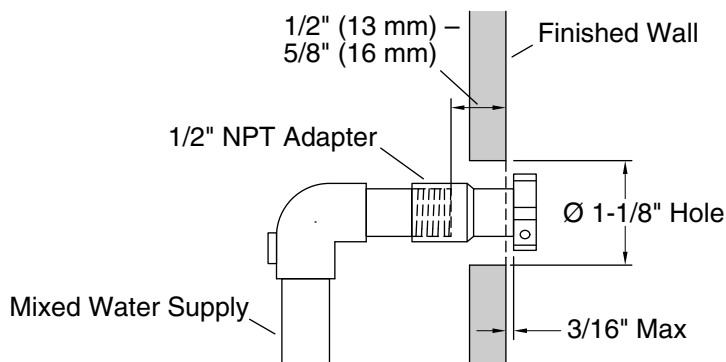
BEFORE YOU BEGIN

- Please read all instructions before you begin.
- Observe all local plumbing and building codes.
- KALLISTA reserves the right to make revisions in the design of products without notice, as specified in the Price Book.

TOOLS AND MATERIALS



1. INSTALL THE ADAPTER

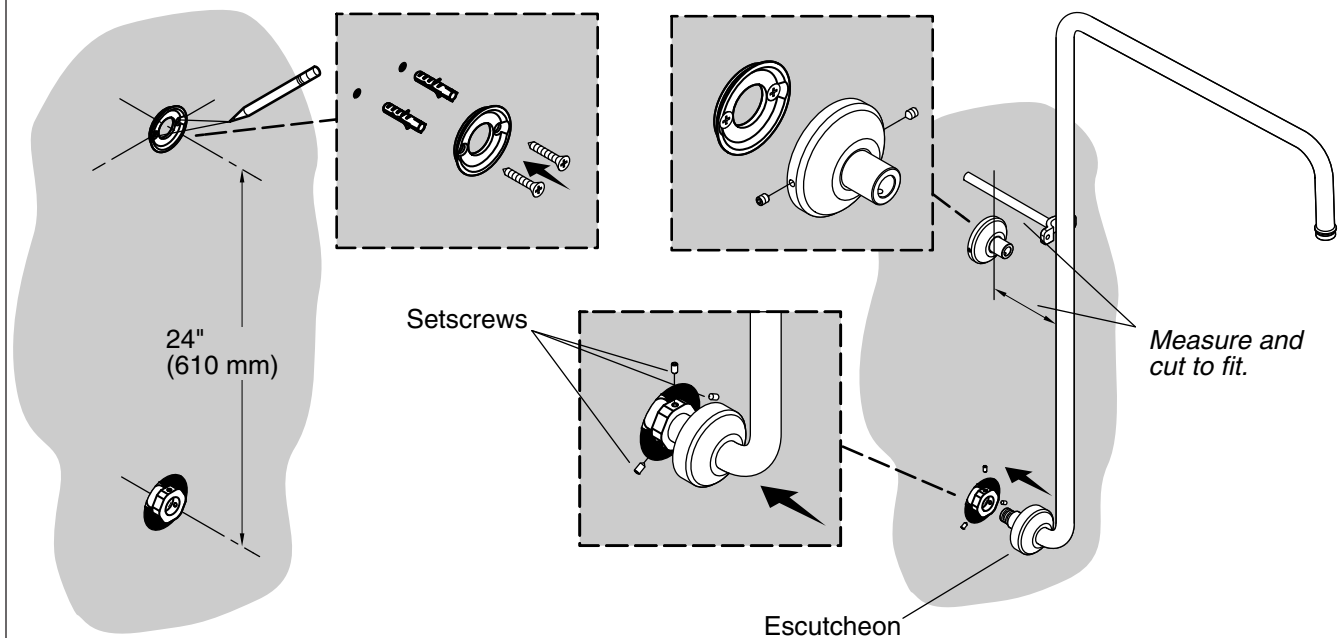


- Shut off the main water supply.
- Install the elbow and water supply prior to installing the finished wall.

INSTALLATION INSTRUCTIONS

- Drill a 1-1/8" (29 mm) hole at the water supply line location.
- Install a 1/2" NPT nipple, with the end 1/2" (13 mm) to 5/8" (16 mm) from the finished wall.
- Apply thread sealant tape to the nipple.
- Thread the adapter onto the nipple.
- Turn the water supply on and check for leaks. Repair as needed.

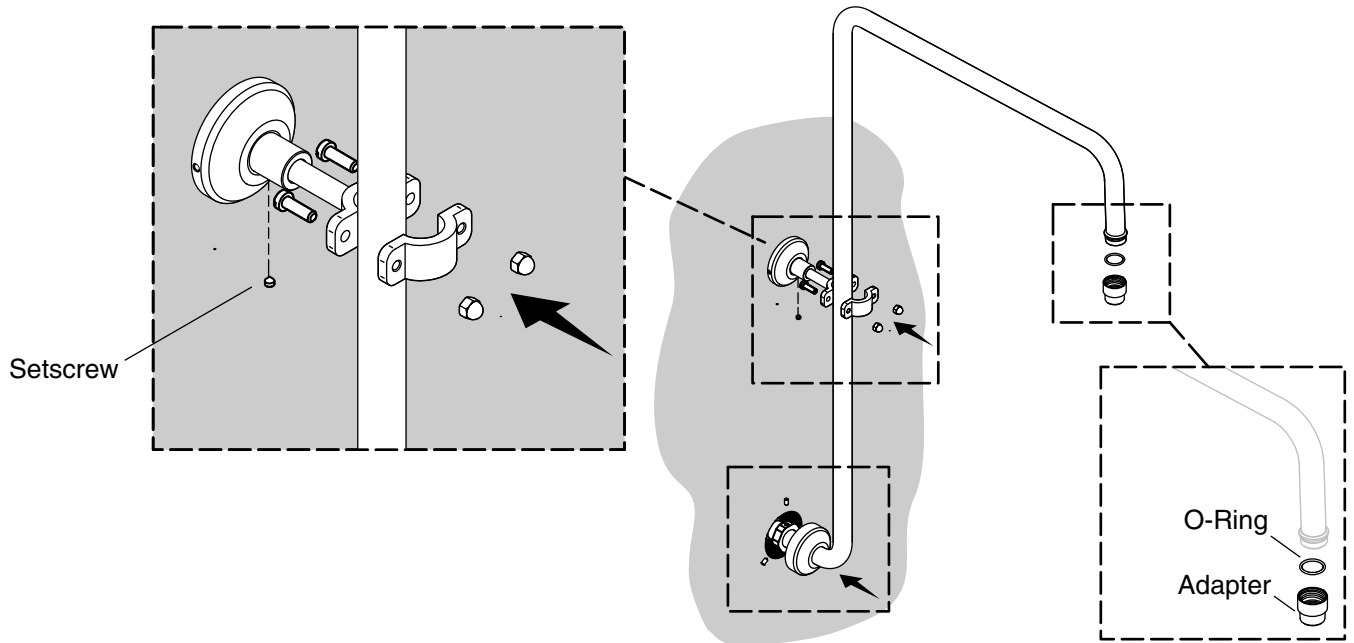
2. INSTALL THE SHOWER ARM



- Measure 24" (610 mm) up from the adapter and mark.
- Confirm the mark is plumb with the center of the adapter.
- Position the wall plate over the mark.
- Center the wall plate on the mark with the holes aligned horizontally.
- Mark the locations of the holes in the wall plate.
- Remove the wall plate.
- Drill 15/64" (6 mm) holes at the marks.
- Install the supplied wall anchors.
- Install the wall plate. Install an escutcheon on the wall plate. Secure with the setscrews. Do not overtighten.
- Slide an escutcheon onto the bottom of the shower arm.
- Slide the inlet of the shower arm into the adapter as far as possible.
- Move the shower arm to the vertical position and check for plumb.
- Secure the shower arm by tightening the three setscrews in the adapter. Do not overtighten.
- With the shower arm in the vertical position, measure the distance from the escutcheon to the inside edge of the shower arm.
- Cut the brace to the measurement.

INSTALLATION INSTRUCTIONS

3. SECURE THE SHOWER ARM



- Disassemble the mounting bracket.
- Insert the brace into the escutcheon and position the bracket against the shower arm.
- Level the sleeve.
- Reassemble the bracket and tighten the nuts.
- Tighten the setscrew.
- Verify all connections are secure.
- Install an O-ring over the threads on the shower arm. Take care not to damage the O-ring on the threads.
- Thread the adapter onto the shower arm.
- Turn on the water supply.
- Check for leaks. Turn the water supply off. Repair as needed.