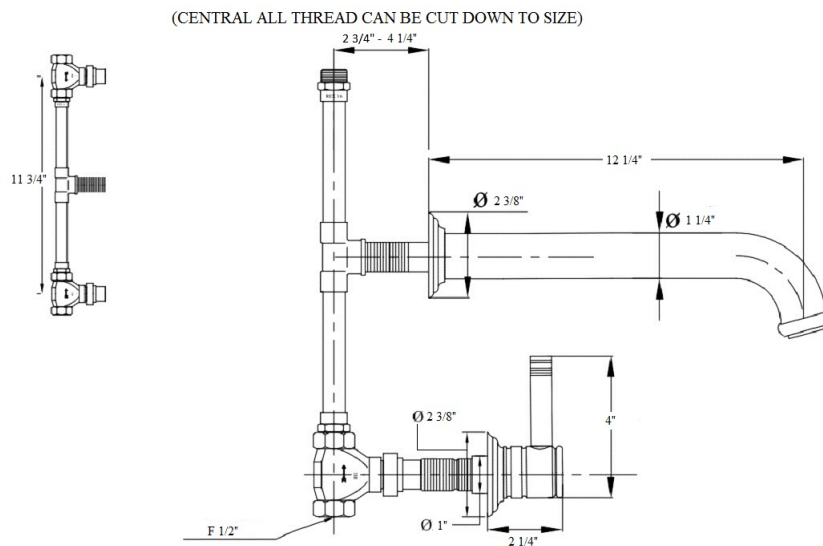


4212 – ‘Lille’ 3-Hole Wall Mount Kitchen Mixer



Technical Information

- IAPMO: NSF/ANSI 61, NSF/ANSI 372 & ASME A112.18.1/CSA B125.1 certified.
- New style metal handles.
- 11 3/4" spread C.T.C.
- 1/4 turn Flühs ceramic Ecobrass cartridges.
- Maximum flow rate is 1.2 GPM with low flow restrictor.
- Available finishes are French Weathered Brass (**47**), Polished Chrome (**48**), SoliBrass (**49**), Lacquered Matte Black Nickel (**50**), Polished Brass (**55**), Polished Nickel (**56**), Brushed Nickel (**57**), Satin Nickel (**60**), Antique Lacquered Copper (**67**), Antique Lacquered Brass (**68**), Weathered Brass (**70**), Lacquered Polished Black Nickel (**71**) and Lacquered Polished Copper (**80**).
- Please See Cleaning Instructions: <http://herbeau.com/CleaningAll.pdf> For Finish Care and Maintenance Information.

Please follow example when ordering parts for ‘Lille’ 3 Hole Mixer

- To order part#20 – Lille Metal Handle

○ 950006xx

- Please substitute finish number needed in place of **xx**

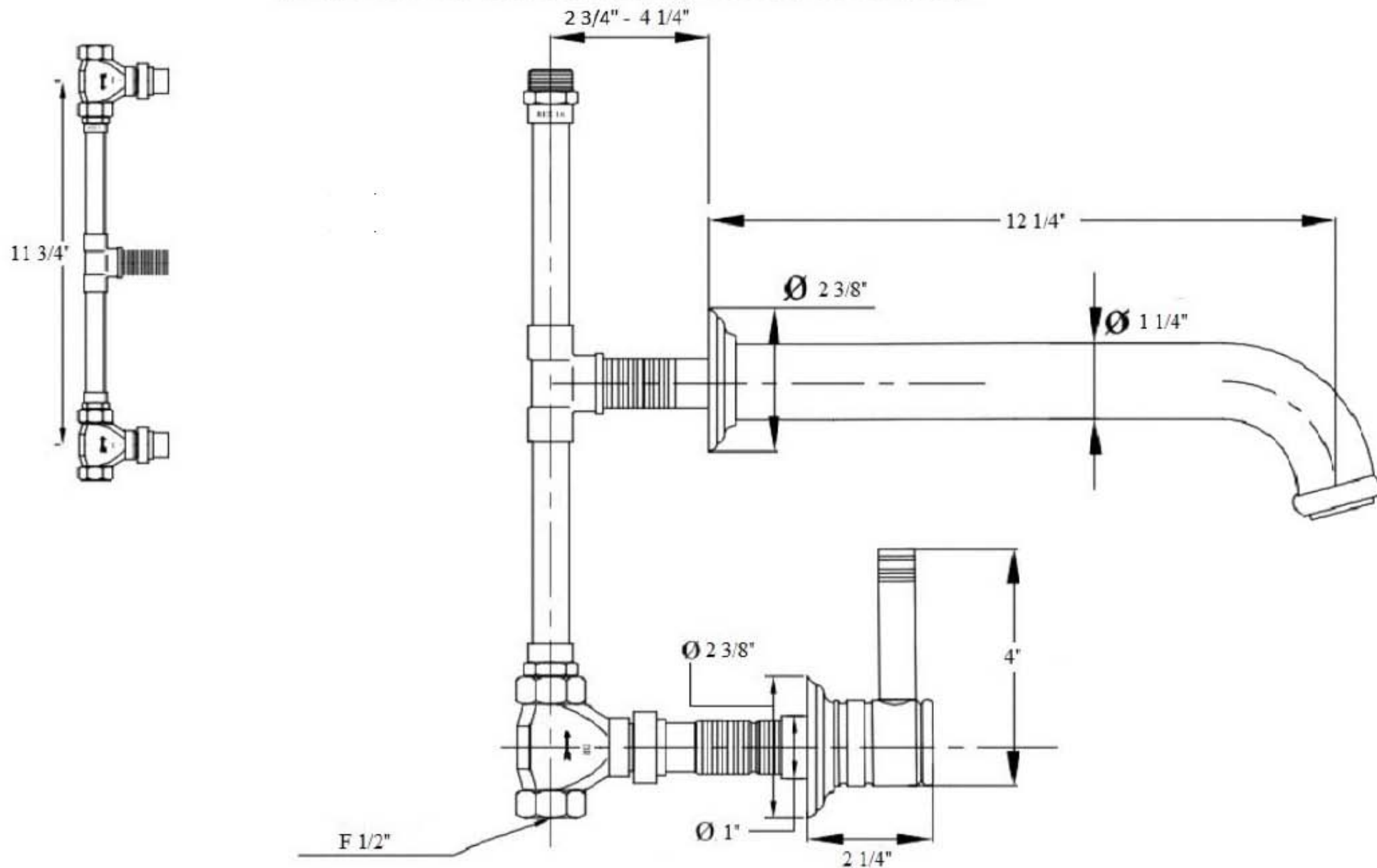
Part #	Description
01	Lille Wall Mount Spout
02	Escutcheon
03	Spout Washer
04	Aerator Filter
05	Aerator Cover
06	Wall Escutcheon
07	Flat Rubber Washer
08	Lille Copper “T” Connection
09	1/2 Turn Cartridge Housing
10	1/2” Brass Adapter
11	1/4 Turn Ceramic Cartridge/Right
12	1/4 Turn Ceramic Cartridge/Left
13	Brass Hexagon Tube
14	Brass Extension
16	Rubber O-Ring
17	Inner Trim Housing
18	Spline Adapter
19	Threaded Stem
20	Lille Metal Handle
21	Lille Handle Base



Herbeau®
L'Art du Sanitaire depuis 1857

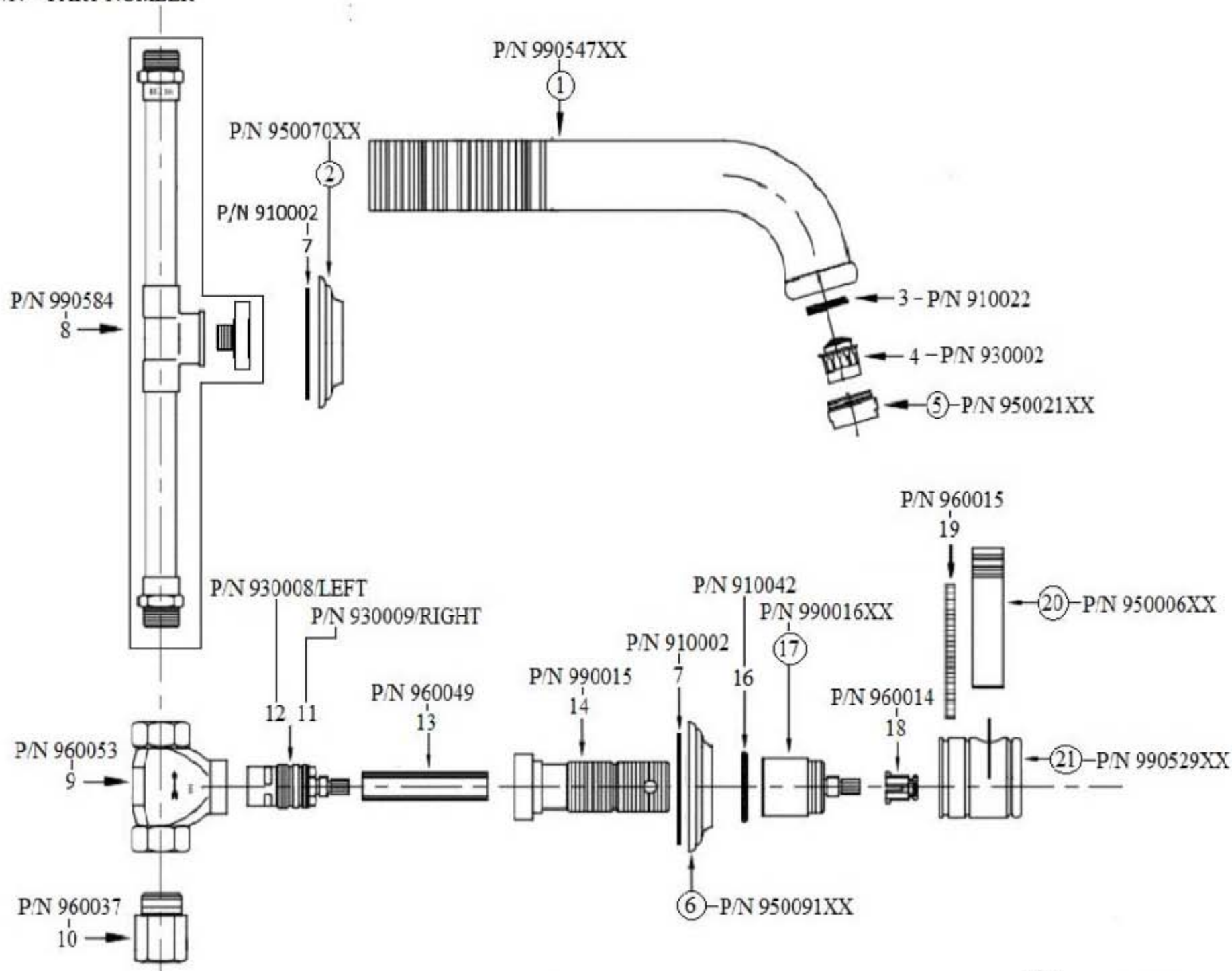
4212 - 'Lille' 3Hole Wall Mount Kitchen Mixer

(CENTRAL ALL THREAD CAN BE CUT DOWN TO SIZE)



4212 - 'Lille' 3 Hole Wall Mount Kitchen Mixer

*P/N = PART NUMBER



○ = FINISHED PARTS
XX = TWO DIGIT FINISH CODE