

INSTALLATION INSTRUCTIONS

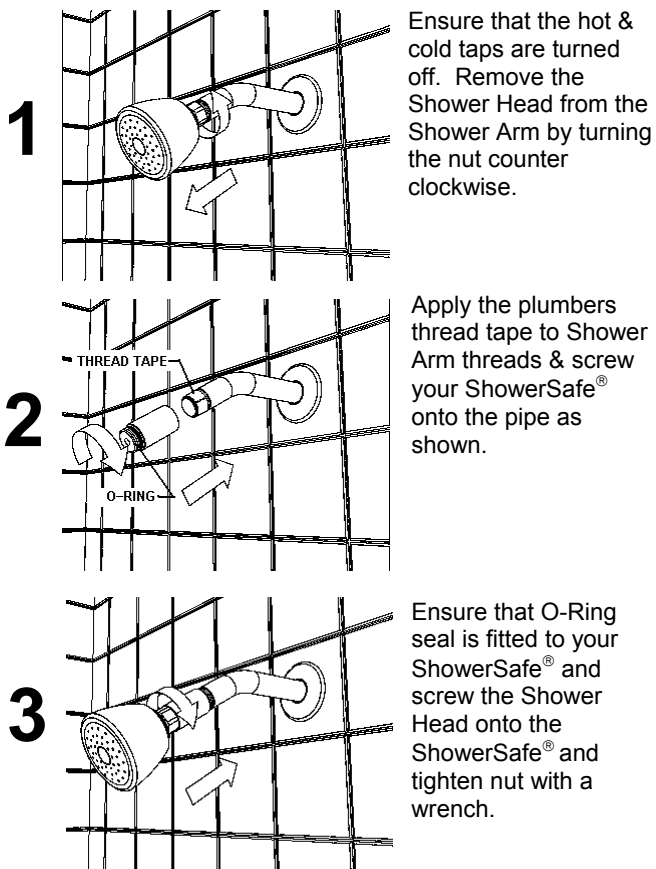
FUNCTION:

Storage hot water systems should deliver water at a minimum of 140°F to prevent bacteria growth. However at this temperature it takes one second for a severe burn or scald to occur!

ShowerSafe® is designed to ensure water is delivered at a temperature of not more than 120°F. Providing it is correctly installed and operated, the bath water temperature cannot exceed this temperature, thereby protecting individuals from hot water burns. Its quick shut-down action also assists in prevention of scalding should the hot tap be accidentally turned on.

INSTALLATION INSTRUCTIONS:

YOU WILL NEED PLUMBERS THREAD TAPE



1 Ensure that the hot & cold taps are turned off. Remove the Shower Head from the Shower Arm by turning the nut counter clockwise.

2 Apply the plumbers thread tape to Shower Arm threads & screw your ShowerSafe® onto the pipe as shown.

3 Ensure that O-Ring seal is fitted to your ShowerSafe® and screw the Shower Head onto the ShowerSafe® and tighten nut with a wrench.

OPERATION:

For normal operation, first turn on the cold water to achieve the desired flow rate, then introduce hot water until the preferred temperature is reached.

TEST:

- When testing, ensure that no person is in the line of flow of water or in the catchments of the water.
- Have a strong flow of warm water pass through the shower fitting, then close the cold tap & observe the water shut-down.

ShowerSafe®

Hot Water Shut-Down Valve Model: SSD

- Once the shut-down has occurred this product will reduce the flow of hot water to a trickle. This continuation of water flow is necessary to allow resetting to occur.
- It is recommended that this product be tested monthly.

RESET:

- When ShowerSafe® shuts down the hot water flow, turn off the hot tap, stand clear of the flow and open the cold tap. ShowerSafe® will reset as soon as the hot water is purged from the pipes.
- Turn on the cold water to achieve the desired flow rate, then introduce hot water until the preferred temperature is reached.

VALVE SPECIFICATIONS:

Hot water supply temperature	185°F max
Water supply pressure static	200 psi max.
Flow rate @ 73 psi:	
Normal	greater than 6gpm
Shut-down	less than 0.1gpm
Nominal Set temperature	120°F (+/- 3°F)
Max. Operating Pressure	145 psi
Min. Operating Pressure	less than 1 psi

WARNING

- This product is designed to reduce the incidence of scalding; however hot water will trickle from the unit when shut-down occurs.
- Shower fittings fitted with this product should not be operated by children without parental supervision.
- This product may not operate properly if incorrectly installed.
- It is recommended that this product be replaced if test failure occurs.
- This product is not a substitute for Tempering Valves or Thermostatic Mixing Vales.

Thread Size 1/2" NPT



Direction of flow

Proposition 65 Warning (for California Residents Only)

This product contains a chemical known to the State of California to cause cancer, birth defects or other reproductive harm.

NOTE TO INSTALLER/CONTRACTOR: California law requires this notice to be provided to the consumer/end user of this product.

I0460 Rev. B

Cash Acme

A division of the Reliance Worldwide Corporation
2400 7th Avenue SW • Cullman, Alabama

Tel: (256) 775-8200 • Fax: (256) 775-8238 • Toll Free: (877) 700-4242 • www.cashacme.com