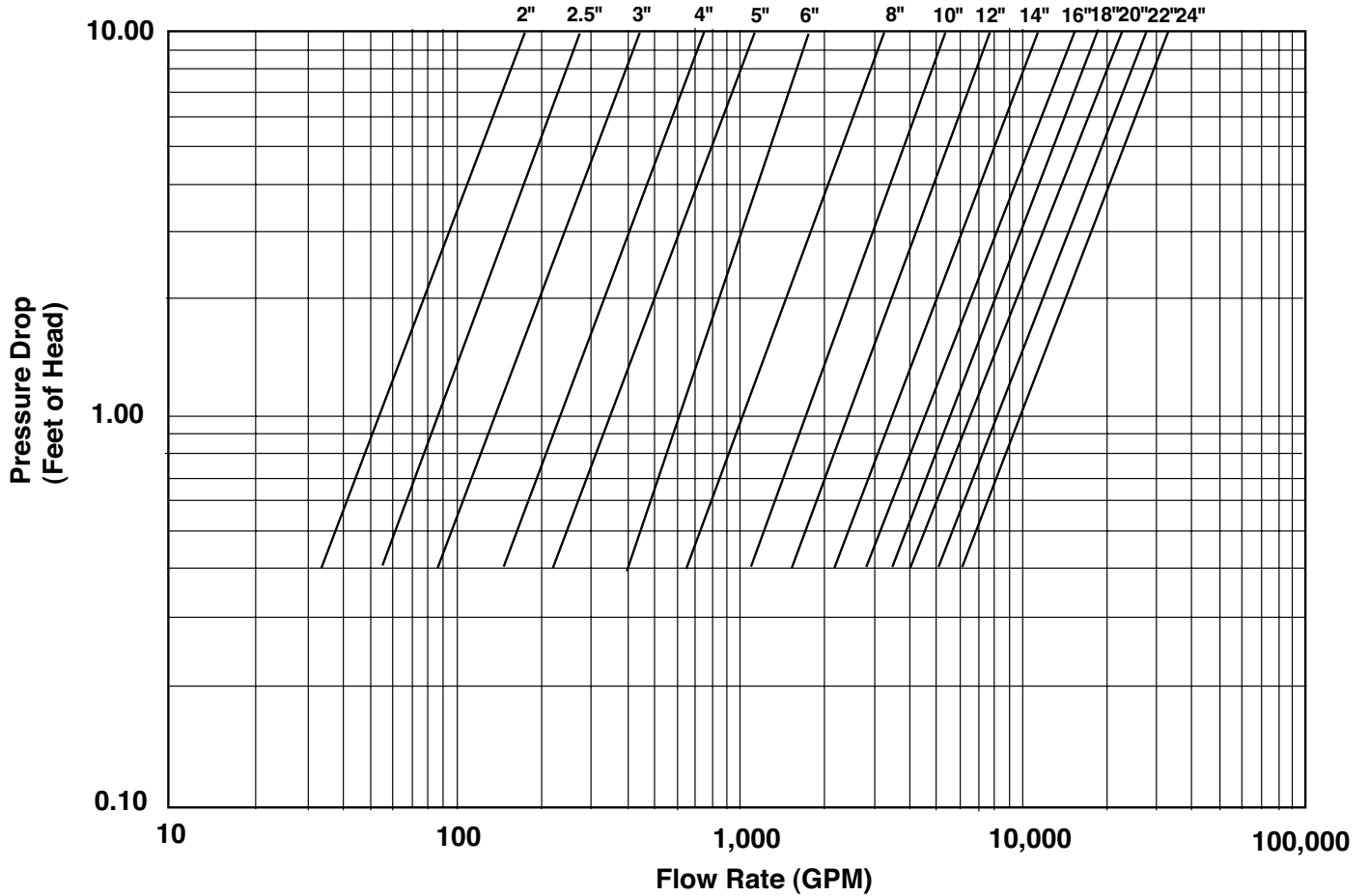




AIR SEPARATOR

Tangential Air Separators: 2" - 24" with Strainer ASME

Flow/Pressure Drop Chart



Indicates pressure drop in feet of water versus flow in gallons per minute with strainer. This is an improved method for properly computing pressure drop in AMTROL Air Separators.

All calculations are approximate.

| | |
|------------------|-------------|
| Job Name _____ | Notes _____ |
| Engineer _____ | _____ |
| Contractor _____ | _____ |
| P.O. No. _____ | _____ |
| Sales Rep. _____ | _____ |
| Model No. _____ | _____ |

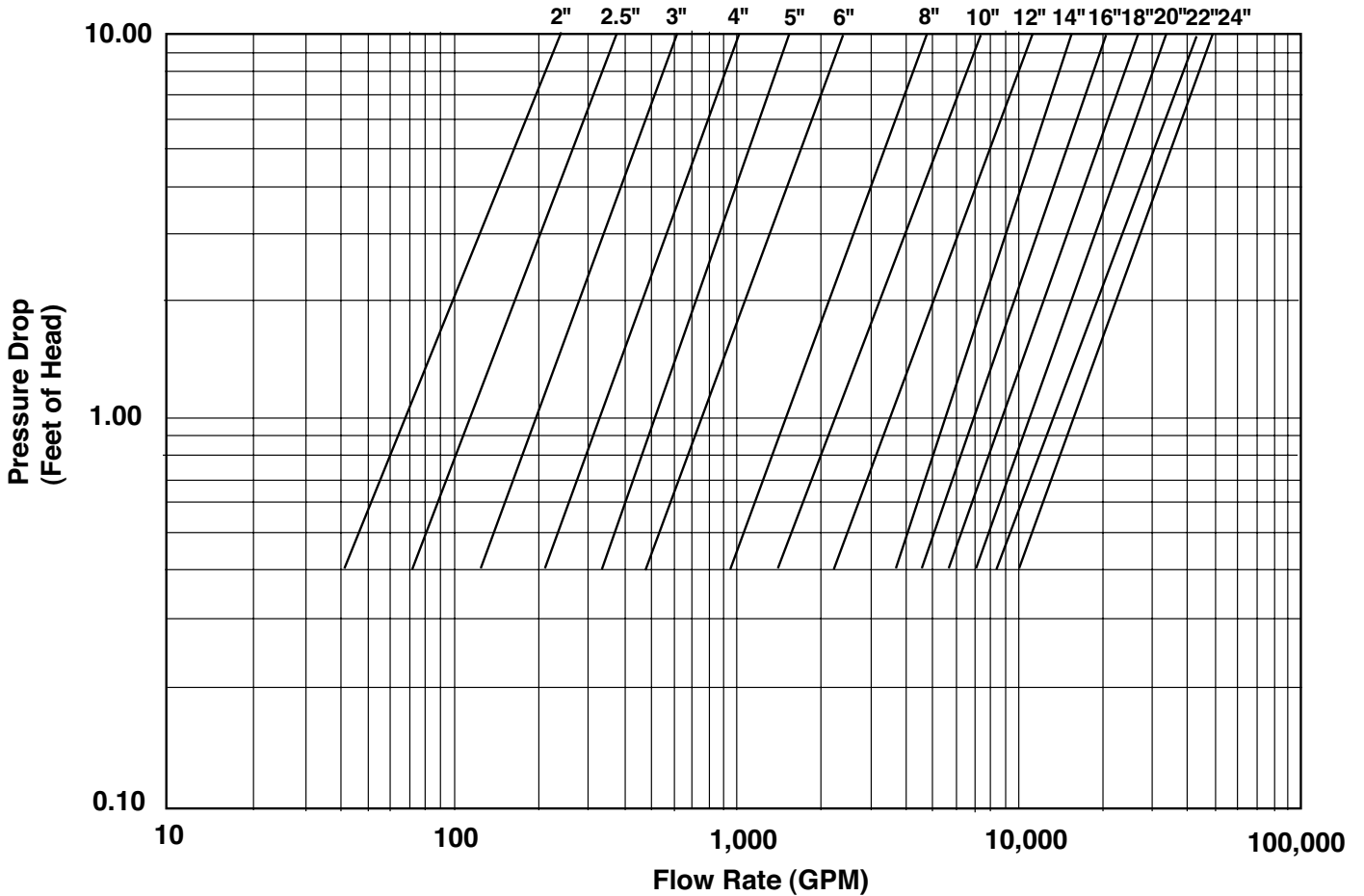




AIR SEPARATOR

Tangential Air Separators: 1" - 24" without Strainer ASME

Flow/Pressure Drop Chart



Indicates pressure drop in feet of water versus flow in gallons per minute without strainer. This is an improved method for properly computing pressure drop in AMTROL Air Separators.

All calculations are approximate.

| | |
|------------------|-------------|
| Job Name _____ | Notes _____ |
| Engineer _____ | _____ |
| Contractor _____ | _____ |
| P.O. No. _____ | _____ |
| Sales Rep. _____ | _____ |
| Model No. _____ | _____ |





AIR SEPARATOR

Tangential Air Separators: 2" - 24" with Strainer ASME

125 PSIG Working Pressure

Construction

| | |
|--------------------|---------------------|
| Body | ASME Approved Steel |
| Flanges | ASME Class 150 |
| Removable Strainer | 304 Stainless Steel |

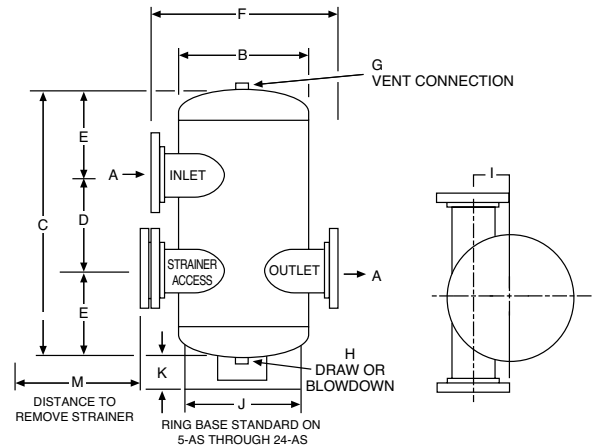
Performance

| | |
|-------------------------------|--------------------|
| Maximum Operating Temperature | 350°F (176.7°C) |
| Maximum Working Pressure | 125 PSIG (8.6 bar) |
| Warranty | 1-Year |

Application

- Creates a low velocity vortex that separates and removes entrained air from circulating water or anti-freeze.

- For use in closed, non-potable water systems.
- Designed and constructed per ASME Code Section VIII, Division 1.



ASME Models

| Model Number | Dimensions | | | | | | | | | | | | Sq In | Shipping Weight | | Clearance to Remove Strainer |
|--------------|------------|----|-----|----|-----|----|----|----|----|-----|-----|-----|---------------------------|-----------------|------|------------------------------|
| | A | B | C | D | E | F | G | H | I | J | K | M | Strainer Screen Free Area | Lbs | Kg | In |
| | In | In | In | In | In | In | In | In | In | In | In | In | | | | |
| 2-AS | 2 | 10 | 23 | 8 | 7½ | 17 | ¾ | ¾ | 3 | - | - | 14 | 33 | 45 | 20 | 12 |
| 2½-AS | 2½ | 10 | 23 | 8 | 7½ | 17 | ¾ | ¾ | 3 | - | - | 14 | 40 | 54 | 24 | 13 |
| 3-AS | 3 | 10 | 23 | 8 | 7½ | 17 | ¾ | ¾ | 3 | - | - | 14 | 45 | 60 | 27 | 15 |
| 4-AS | 4 | 12 | 25 | 10 | 7½ | 21 | ¾ | ¾ | 3½ | - | - | 16½ | 78 | 70 | 32 | 17 |
| 5-AS | 5 | 16 | 34½ | 12 | 11¼ | 24 | ¾ | ¾ | 4¼ | 12¾ | 4⅝ | 21½ | 120 | 200 | 91 | 22 |
| 6-AS | 6 | 18 | 39 | 14 | 12½ | 26 | ¾ | ¾ | 4¼ | 14 | 4⅝ | 23 | 186 | 249 | 113 | 24 |
| 8-AS | 8 | 24 | 52 | 18 | 17 | 32 | ¾ | ¾ | 5¼ | 16 | 4⅝ | 29 | 313 | 375 | 170 | 30 |
| 10-AS | 10 | 30 | 59½ | 22 | 18¾ | 40 | ¾ | ¾ | 7¼ | 24 | 4⅝ | 35 | 491 | 750 | 340 | 36 |
| 12-AS | 12 | 36 | 70 | 26 | 22 | 46 | ¾ | ¾ | 7¼ | 30 | 12⅝ | 40 | 644 | 950 | 431 | 45 |
| 14-AS | 14 | 42 | 87 | 30 | 28½ | 56 | ¾ | ¾ | 13 | 30 | 13⅜ | 48 | 810 | 2200 | 998 | 49 |
| 16-AS | 16 | 48 | 90 | 32 | 29 | 64 | 3 | 3 | 15 | 42 | 12½ | 56 | 969 | 3000 | 1361 | 59 |
| 18-AS | 18 | 54 | 102 | 36 | 33 | 64 | 3 | 3 | 16 | 42 | 12⅝ | 62 | 1517 | 3500 | 1588 | 62 |
| 20-AS | 20 | 60 | 100 | 30 | 35 | 70 | 3 | 3 | 19 | 45 | 6⅝ | 68 | 1860 | 5000 | 2268 | 70 |
| 22-AS | 22 | 60 | 119 | 48 | 35½ | 70 | 3 | 3 | 18 | 45 | 7 | 68 | 2073 | 5500 | 2495 | 74 |
| 24-AS | 24 | 72 | 136 | 43 | 46½ | 82 | 3 | 3 | 22 | 45 | 8 | 80 | 2712 | 7000 | 3175 | 80 |

All dimensions and weights are approximate.

| | |
|------------------|-------------|
| Job Name _____ | Notes _____ |
| Engineer _____ | _____ |
| Contractor _____ | _____ |
| P.O. No. _____ | _____ |
| Sales Rep. _____ | _____ |
| Model No. _____ | _____ |





AIR SEPARATOR

Tangential Air Separators: 2" - 24" with Strainer ASME

150 PSIG Working Pressure

Construction

| | |
|--------------------|---------------------|
| Body | ASME Approved Steel |
| Flanges | ASME Class 150 |
| Removable Strainer | 304 Stainless Steel |

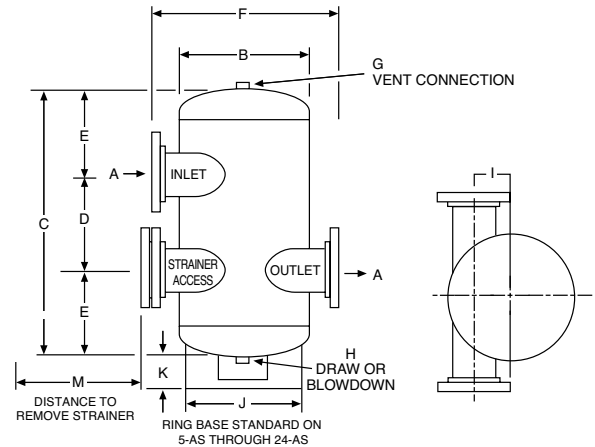
Performance

| | |
|-------------------------------|---------------------|
| Maximum Operating Temperature | 350°F (176.7°C) |
| Maximum Working Pressure | 150 PSIG (10.3 bar) |
| Warranty | 1-Year |

Application

- Creates a low velocity vortex that separates and removes entrained air from circulating water or anti-freeze.

- For use in closed, non-potable water systems.
- Designed and constructed per ASME Code Section VIII, Division 1.



ASME Models

| Model Number | Dimensions | | | | | | | | | | | | Sq In | Shipping Weight | | Clearance to Remove Strainer |
|--------------|------------|----|-----|----|-----|----|----|----|----|-----|-----|-----|---------------------------|-----------------|------|------------------------------|
| | A | B | C | D | E | F | G | H | I | J | K | M | Strainer Screen Free Area | Lbs | Kg | In |
| | In | In | In | In | In | In | In | In | In | In | In | In | | | | |
| 2-AS | 2 | 10 | 23 | 8 | 7½ | 17 | ¾ | ¾ | 3 | - | - | 14 | 33 | 47 | 21 | 12 |
| 2½-AS | 2½ | 10 | 23 | 8 | 7½ | 17 | ¾ | ¾ | 3 | - | - | 14 | 40 | 58 | 26 | 13 |
| 3-AS | 3 | 10 | 23 | 8 | 7½ | 17 | ¾ | ¾ | 3 | - | - | 14 | 45 | 64 | 29 | 15 |
| 4-AS | 4 | 12 | 25 | 10 | 7½ | 21 | ¾ | ¾ | 3½ | - | - | 16½ | 78 | 83 | 38 | 17 |
| 5-AS | 5 | 16 | 34½ | 12 | 11¼ | 24 | ¾ | ¾ | 4¼ | 12¾ | 4⅝ | 21½ | 120 | 220 | 100 | 22 |
| 6-AS | 6 | 18 | 39 | 14 | 12½ | 26 | ¾ | ¾ | 4¼ | 14 | 4⅝ | 23 | 186 | 261 | 118 | 24 |
| 8-AS | 8 | 24 | 52 | 18 | 17 | 32 | ¾ | ¾ | 5¼ | 16 | 4⅝ | 29 | 313 | 445 | 202 | 30 |
| 10-AS | 10 | 30 | 59½ | 22 | 18¾ | 40 | ¾ | ¾ | 7¼ | 24 | 4⅝ | 35 | 491 | 800 | 363 | 36 |
| 12-AS | 12 | 36 | 70 | 26 | 22 | 46 | ¾ | ¾ | 7¼ | 30 | 12⅝ | 40 | 644 | 1060 | 481 | 45 |
| 14-AS | 14 | 42 | 87 | 30 | 28½ | 56 | ¾ | ¾ | 13 | 30 | 13⅜ | 48 | 810 | 2500 | 1134 | 49 |
| 16-AS | 16 | 48 | 90 | 32 | 29 | 64 | 3 | 3 | 15 | 42 | 12½ | 56 | 969 | 3900 | 1769 | 59 |
| 18-AS | 18 | 54 | 102 | 36 | 33 | 64 | 3 | 3 | 16 | 42 | 12⅝ | 62 | 1517 | 4700 | 2132 | 62 |
| 20-AS | 20 | 60 | 100 | 30 | 35 | 70 | 3 | 3 | 19 | 45 | 6⅝ | 68 | 1860 | 6100 | 2767 | 70 |
| 22-AS | 22 | 60 | 119 | 48 | 35½ | 70 | 3 | 3 | 18 | 45 | 7 | 68 | 2073 | 6600 | 2994 | 74 |
| 24-AS | 24 | 72 | 136 | 43 | 46½ | 82 | 3 | 3 | 22 | 45 | 8 | 80 | 2712 | 8400 | 3810 | 80 |

All dimensions and weights are approximate.

| | |
|------------------|-------------|
| Job Name _____ | Notes _____ |
| Engineer _____ | _____ |
| Contractor _____ | _____ |
| P.O. No. _____ | _____ |
| Sales Rep. _____ | _____ |
| Model No. _____ | _____ |





AIR SEPARATOR

Tangential Air Separators: 2" - 24" with Strainer ASME

175 PSIG Working Pressure

Construction

| | |
|--------------------|---------------------|
| Body | ASME Approved Steel |
| Flanges | ASME Class 150 |
| Removable Strainer | 304 Stainless Steel |

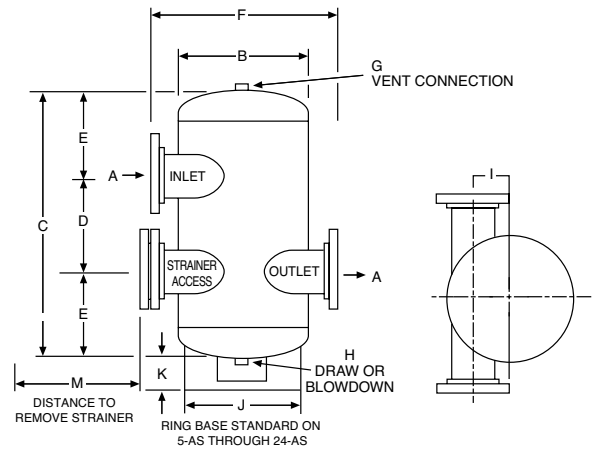
Performance

| | |
|-------------------------------|-------------------|
| Maximum Operating Temperature | 350°F (176.7°C) |
| Maximum Working Pressure | 175 PSIG (12 bar) |
| Warranty | 1-Year |

Application

- Creates a low velocity vortex that separates and removes entrained air from circulating water or anti-freeze.

- For use in closed, non-potable water systems.
- Designed and constructed per ASME Code Section VIII, Division 1.



ASME Models

| Model Number | Dimensions | | | | | | | | | | | | Sq In | Shipping Weight | | Clearance to Remove Strainer |
|--------------|------------|----|-----|----|-----|----|----|----|----|-----|-----|-----|-------|---------------------------|------|------------------------------|
| | A | B | C | D | E | F | G | H | I | J | K | M | | Strainer Screen Free Area | Lbs | |
| | In | In | In | In | In | In | In | In | In | In | In | In | | | | |
| 2-AS | 2 | 10 | 23 | 8 | 7½ | 17 | ¾ | ¾ | 3 | - | - | 14 | 33 | 63 | 29 | 12 |
| 2½-AS | 2½ | 10 | 23 | 8 | 7½ | 17 | ¾ | ¾ | 3 | - | - | 14 | 40 | 75 | 34 | 13 |
| 3-AS | 3 | 10 | 23 | 8 | 7½ | 17 | ¾ | ¾ | 3 | - | - | 14 | 45 | 84 | 38 | 15 |
| 4-AS | 4 | 12 | 25 | 10 | 7½ | 21 | ¾ | ¾ | 3½ | - | - | 16½ | 78 | 98 | 44 | 17 |
| 5-AS | 5 | 16 | 34½ | 12 | 11¼ | 24 | ¾ | ¾ | 4¼ | 12¾ | 4⅝ | 21½ | 120 | 280 | 127 | 22 |
| 6-AS | 6 | 18 | 39 | 14 | 12½ | 26 | ¾ | ¾ | 4¼ | 14 | 4⅝ | 23 | 186 | 348 | 158 | 24 |
| 8-AS | 8 | 24 | 52 | 18 | 17 | 32 | ¾ | ¾ | 5¼ | 16 | 4⅝ | 29 | 313 | 525 | 238 | 30 |
| 10-AS | 10 | 30 | 59½ | 22 | 18¾ | 40 | ¾ | ¾ | 7¼ | 24 | 4⅝ | 35 | 491 | 1050 | 476 | 36 |
| 12-AS | 12 | 36 | 70 | 26 | 22 | 46 | ¾ | ¾ | 7¼ | 30 | 12⅝ | 40 | 644 | 1330 | 603 | 45 |
| 14-AS | 14 | 42 | 87 | 30 | 28½ | 56 | ¾ | ¾ | 13 | 30 | 13⅜ | 48 | 810 | 3080 | 1397 | 49 |
| 16-AS | 16 | 48 | 90 | 32 | 29 | 64 | 3 | 3 | 15 | 42 | 12½ | 56 | 969 | 4200 | 1905 | 59 |
| 18-AS | 18 | 54 | 102 | 36 | 33 | 64 | 3 | 3 | 16 | 42 | 12⅝ | 62 | 1517 | 4900 | 2223 | 62 |
| 20-AS | 20 | 60 | 100 | 30 | 35 | 70 | 3 | 3 | 19 | 45 | 6⅝ | 68 | 1860 | 7000 | 3175 | 70 |
| 22-AS | 22 | 60 | 119 | 48 | 35½ | 70 | 3 | 3 | 18 | 45 | 7 | 68 | 2073 | 7700 | 3493 | 74 |
| 24-AS | 24 | 72 | 136 | 43 | 46½ | 82 | 3 | 3 | 22 | 45 | 8 | 80 | 2712 | 9800 | 4445 | 80 |

All dimensions and weights are approximate.

| | |
|------------------|-------------|
| Job Name _____ | Notes _____ |
| Engineer _____ | _____ |
| Contractor _____ | _____ |
| P.O. No. _____ | _____ |
| Sales Rep. _____ | _____ |
| Model No. _____ | _____ |





AIR SEPARATOR

Tangential Air Separators: 2" - 24" with Strainer ASME

250 PSIG Working Pressure

Construction

| | |
|--------------------|---------------------|
| Body | ASME Approved Steel |
| Flanges | ASME Class 300 |
| Removable Strainer | 304 Stainless Steel |

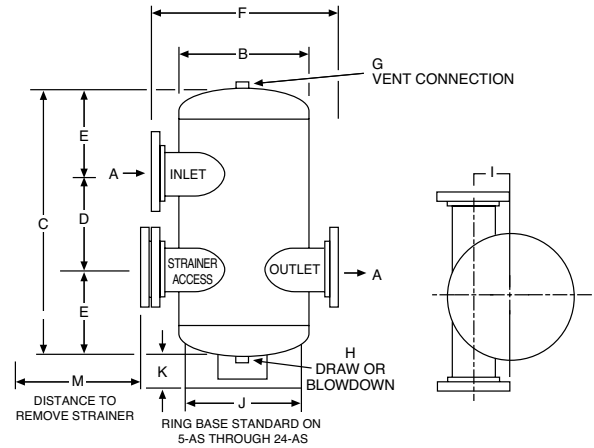
Performance

| | |
|-------------------------------|---------------------|
| Maximum Operating Temperature | 350°F (176.7°C) |
| Maximum Working Pressure | 250 PSIG (17.2 bar) |
| Warranty | 1-Year |

Application

- Creates a low velocity vortex that separates and removes entrained air from circulating water or anti-freeze.

- For use in closed, non-potable water systems.
- Designed and constructed per ASME Code Section VIII, Division 1.



ASME Models

| Model Number | Dimensions | | | | | | | | | | | | Sq In Strainer Screen Free Area | Shipping Weight | | Clearance to Remove Strainer In |
|--------------|------------|----|-----|----|-----|----|----|----|----|-----|-----|-----|------------------------------------|-----------------|------|------------------------------------|
| | A | B | C | D | E | F | G | H | I | J | K | M | | Lbs | Kg | |
| | In | In | In | In | In | In | In | In | In | In | In | In | | | | |
| 2-AS | 2 | 10 | 23 | 8 | 7½ | 17 | ¾ | ¾ | 3 | - | - | 14 | 33 | 72 | 33 | 12 |
| 2½-AS | 2½ | 10 | 23 | 8 | 7½ | 17 | ¾ | ¾ | 3 | - | - | 14 | 40 | 86 | 39 | 13 |
| 3-AS | 3 | 10 | 23 | 8 | 7½ | 17 | ¾ | ¾ | 3 | - | - | 14 | 45 | 96 | 44 | 15 |
| 4-AS | 4 | 12 | 25 | 10 | 7½ | 21 | ¾ | ¾ | 3½ | - | - | 16½ | 78 | 112 | 51 | 17 |
| 5-AS | 5 | 16 | 34½ | 12 | 11¼ | 24 | ¾ | ¾ | 4¼ | 12¾ | 4⅝ | 21½ | 120 | 320 | 145 | 22 |
| 6-AS | 6 | 18 | 39 | 14 | 12½ | 26 | ¾ | ¾ | 4¼ | 14 | 4⅝ | 23 | 186 | 398 | 181 | 24 |
| 8-AS | 8 | 24 | 52 | 18 | 17 | 32 | ¾ | ¾ | 5¼ | 16 | 4⅝ | 29 | 313 | 600 | 272 | 30 |
| 10-AS | 10 | 30 | 59½ | 22 | 18¾ | 40 | ¾ | ¾ | 7¼ | 24 | 4⅝ | 35 | 491 | 1200 | 544 | 36 |
| 12-AS | 12 | 36 | 70 | 26 | 22 | 46 | ¾ | ¾ | 7¼ | 30 | 12⅝ | 40 | 644 | 1520 | 689 | 45 |
| 14-AS | 14 | 42 | 87 | 30 | 28½ | 56 | ¾ | ¾ | 13 | 30 | 13⅝ | 48 | 810 | 3520 | 1597 | 49 |
| 16-AS | 16 | 48 | 90 | 32 | 29 | 64 | 3 | 3 | 15 | 42 | 12½ | 56 | 969 | 4800 | 2177 | 59 |
| 18-AS | 18 | 54 | 102 | 36 | 33 | 64 | 3 | 3 | 16 | 42 | 12⅝ | 62 | 1517 | 5600 | 2540 | 62 |
| 20-AS | 20 | 60 | 100 | 30 | 35 | 70 | 3 | 3 | 19 | 45 | 6⅝ | 68 | 1860 | 8000 | 3629 | 70 |
| 22-AS | 22 | 60 | 119 | 48 | 35½ | 70 | 3 | 3 | 18 | 45 | 7 | 68 | 2073 | 8800 | 3992 | 74 |
| 24-AS | 24 | 72 | 136 | 43 | 46½ | 82 | 3 | 3 | 22 | 45 | 8 | 80 | 2712 | 11200 | 5080 | 80 |

All dimensions and weights are approximate.

| | |
|------------------|-------------|
| Job Name _____ | Notes _____ |
| Engineer _____ | _____ |
| Contractor _____ | _____ |
| P.O. No. _____ | _____ |
| Sales Rep. _____ | _____ |
| Model No. _____ | _____ |





AIR SEPARATOR

Tangential Air Separators: 2" - 24" with Strainer ASME

300 PSIG Working Pressure

Construction

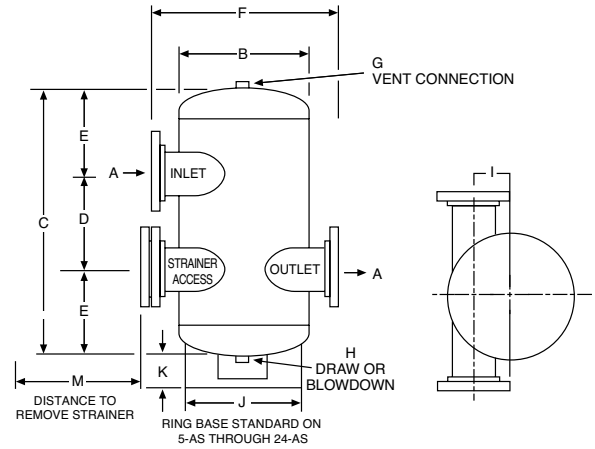
| | |
|--------------------|---------------------|
| Body | ASME Approved Steel |
| Flanges | ASME Class 300 |
| Removable Strainer | 304 Stainless Steel |

Performance

| | |
|-------------------------------|---------------------|
| Maximum Operating Temperature | 350°F (176.7°C) |
| Maximum Working Pressure | 300 PSIG (20.7 bar) |
| Warranty | 1-Year |

Application

- Creates a low velocity vortex that separates and removes entrained air from circulating water or anti-freeze.
- For use in closed, non-potable water systems.
- Designed and constructed per ASME Code Section VIII, Division 1.



ASME Models

| Model Number | Dimensions | | | | | | | | | | | | Sq In | Shipping Weight | | Clearance to Remove Strainer |
|--------------|------------|----|-----|----|-----|----|----|----|----|-----|-----|-----|---------------------------|-----------------|------|------------------------------|
| | A | B | C | D | E | F | G | H | I | J | K | M | Strainer Screen Free Area | Lbs | Kg | In |
| | In | In | In | In | In | In | In | In | In | In | In | In | | | | |
| 2-AS | 2 | 10 | 23 | 8 | 7½ | 17 | ¾ | ¾ | 3 | - | - | 14 | 33 | 81 | 37 | 12 |
| 2½-AS | 2½ | 10 | 23 | 8 | 7½ | 17 | ¾ | ¾ | 3 | - | - | 14 | 40 | 97 | 44 | 13 |
| 3-AS | 3 | 10 | 23 | 8 | 7½ | 17 | ¾ | ¾ | 3 | - | - | 14 | 45 | 108 | 49 | 15 |
| 4-AS | 4 | 12 | 25 | 10 | 7½ | 21 | ¾ | ¾ | 3½ | - | - | 16½ | 78 | 126 | 57 | 17 |
| 5-AS | 5 | 16 | 34½ | 12 | 11¼ | 24 | ¾ | ¾ | 4¼ | 12¾ | 4⅝ | 21½ | 120 | 360 | 163 | 22 |
| 6-AS | 6 | 18 | 39 | 14 | 12½ | 26 | ¾ | ¾ | 4¼ | 14 | 4⅝ | 23 | 186 | 448 | 203 | 24 |
| 8-AS | 8 | 24 | 52 | 18 | 17 | 32 | ¾ | ¾ | 5¼ | 16 | 4⅝ | 29 | 313 | 675 | 306 | 30 |
| 10-AS | 10 | 30 | 59½ | 22 | 18¾ | 40 | ¾ | ¾ | 7¼ | 24 | 4⅝ | 35 | 491 | 1350 | 612 | 36 |
| 12-AS | 12 | 36 | 70 | 26 | 22 | 46 | ¾ | ¾ | 7¼ | 30 | 12⅝ | 40 | 644 | 1710 | 776 | 45 |
| 14-AS | 14 | 42 | 87 | 30 | 28½ | 56 | ¾ | ¾ | 13 | 30 | 13⅝ | 48 | 810 | 3960 | 1796 | 49 |
| 16-AS | 16 | 48 | 90 | 32 | 29 | 64 | 3 | 3 | 15 | 42 | 12½ | 56 | 969 | 5400 | 2449 | 59 |
| 18-AS | 18 | 54 | 102 | 36 | 33 | 64 | 3 | 3 | 16 | 42 | 12⅝ | 62 | 1517 | 6300 | 2858 | 62 |
| 20-AS | 20 | 60 | 100 | 30 | 35 | 70 | 3 | 3 | 19 | 45 | 6⅝ | 68 | 1860 | 9000 | 4082 | 70 |
| 22-AS | 22 | 60 | 119 | 48 | 35½ | 70 | 3 | 3 | 18 | 45 | 7 | 68 | 2073 | 9900 | 4491 | 74 |
| 24-AS | 24 | 72 | 136 | 43 | 46½ | 82 | 3 | 3 | 22 | 45 | 8 | 80 | 2712 | 12600 | 5715 | 80 |

All dimensions and weights are approximate.

| | |
|------------------|-------------|
| Job Name _____ | Notes _____ |
| Engineer _____ | _____ |
| Contractor _____ | _____ |
| P.O. No. _____ | _____ |
| Sales Rep. _____ | _____ |
| Model No. _____ | _____ |





AIR SEPARATOR

Tangential Air Separators: 1" - 24" without Strainer ASME

125 PSIG Working Pressure

Construction

| | |
|---------|---------------------|
| Body | ASME Approved Steel |
| Flanges | ASME Class 150 |

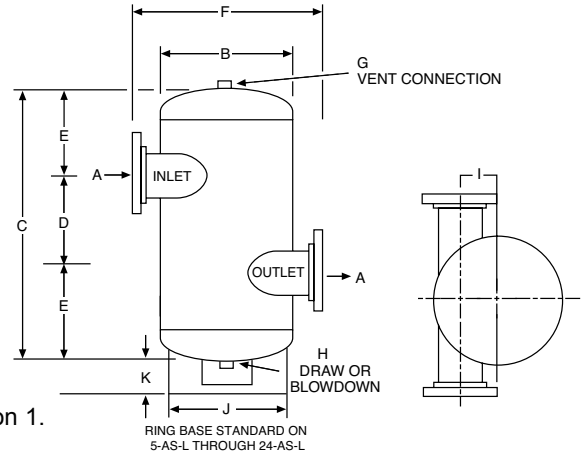
Performance

| | |
|-------------------------------|--------------------|
| Maximum Operating Temperature | 350°F (176.7°C)* |
| Maximum Working Pressure | 125 PSIG (8.6 bar) |
| Warranty | 1-Year |

Application

- Creates a low velocity vortex that separates and removes entrained air from circulating water or anti-freeze.

- For use in closed, non-potable water systems.
- Designed and constructed per ASME Code Section VIII, Division 1.



ASME Models

| Model Number | Dimensions | | | | | | | | | | | | | | | | | | | | Shipping Weight | | | |
|--------------|------------|-----|----|------|-----|------|----|------|-----|------|----|------|----|----|----|----|----|-----|-----|------|-----------------|-----|------|------|
| | A | | B | | C | | D | | E | | F | | G | | H | | I | | J | | K | | Lbs | Kg |
| | In | mm | In | mm | In | mm | In | mm | In | mm | In | mm | In | mm | In | mm | In | mm | In | mm | In | mm | | |
| 1-ASL* | 1 | 25 | 4½ | 114 | 12 | 305 | 4 | 102 | 4 | 102 | 7 | 178 | ¾ | 19 | ¾ | 19 | 1⅙ | 33 | - | - | - | - | 14 | 6 |
| 2-ASL | 2 | 51 | 10 | 254 | 23 | 584 | 8 | 203 | 7½ | 191 | 17 | 432 | ¾ | 19 | ¾ | 19 | 3 | 76 | - | - | - | - | 41 | 19 |
| 2½-ASL | 2½ | 64 | 10 | 254 | 23 | 584 | 8 | 203 | 7½ | 191 | 17 | 432 | ¾ | 19 | ¾ | 19 | 3 | 76 | - | - | - | - | 50 | 23 |
| 3-ASL | 3 | 76 | 10 | 254 | 23 | 584 | 8 | 203 | 7½ | 191 | 17 | 432 | ¾ | 19 | ¾ | 19 | 3 | 76 | - | - | - | - | 56 | 25 |
| 4-ASL | 4 | 102 | 12 | 305 | 25 | 635 | 10 | 254 | 7½ | 191 | 21 | 533 | ¾ | 19 | ¾ | 19 | 3½ | 89 | - | - | - | - | 66 | 30 |
| 5-ASL | 5 | 127 | 16 | 406 | 34½ | 876 | 12 | 305 | 11¼ | 286 | 24 | 610 | ¾ | 19 | ¾ | 19 | 4¼ | 108 | 12¼ | 324 | 4⅝ | 117 | 175 | 79 |
| 6-ASL | 6 | 152 | 18 | 457 | 41 | 1041 | 14 | 356 | 13½ | 343 | 26 | 660 | ¾ | 19 | ¾ | 19 | 4¼ | 108 | 14 | 356 | 4⅝ | 117 | 190 | 86 |
| 8-ASL | 8 | 203 | 24 | 610 | 52 | 1321 | 18 | 457 | 17 | 432 | 32 | 813 | ¾ | 19 | ¾ | 19 | 5¼ | 146 | 16 | 406 | 4⅝ | 117 | 350 | 159 |
| 10-ASL | 10 | 254 | 30 | 762 | 58 | 1473 | 21 | 533 | 18½ | 470 | 40 | 1016 | ¾ | 19 | ¾ | 19 | 7¼ | 197 | 24 | 610 | 4⅝ | 117 | 700 | 318 |
| 12-ASL | 12 | 305 | 36 | 914 | 68 | 1727 | 26 | 660 | 21 | 533 | 46 | 1168 | ¾ | 19 | ¾ | 19 | 7¼ | 197 | 30 | 762 | 12⅝ | 321 | 912 | 414 |
| 14-ASL | 14 | 356 | 42 | 1067 | 87 | 2210 | 30 | 762 | 28½ | 724 | 56 | 1422 | ¾ | 19 | ¾ | 19 | 13 | 330 | 30 | 762 | 13⅝ | 340 | 1853 | 841 |
| 16-ASL | 16 | 406 | 48 | 1219 | 90 | 2286 | 32 | 813 | 29 | 737 | 64 | 1626 | 3 | 76 | 3 | 76 | 15 | 381 | 42 | 1067 | 12½ | 318 | 2610 | 1184 |
| 18-ASL | 18 | 457 | 54 | 1372 | 102 | 2591 | 36 | 914 | 33 | 838 | 64 | 1626 | 3 | 76 | 3 | 76 | 16 | 406 | 42 | 1067 | 12⅝ | 314 | 2900 | 1315 |
| 20-ASL | 20 | 508 | 60 | 1524 | 100 | 2540 | 30 | 762 | 35 | 889 | 70 | 1778 | 3 | 76 | 3 | 76 | 19 | 483 | 45 | 1143 | 6⅙ | 176 | 4560 | 2068 |
| 22-ASL | 22 | 559 | 60 | 1524 | 119 | 3023 | 48 | 1219 | 35½ | 902 | 70 | 1778 | 3 | 76 | 3 | 76 | 18 | 457 | 45 | 1143 | 7 | 178 | 5320 | 2413 |
| 24-ASL | 24 | 610 | 72 | 1829 | 131 | 3327 | 43 | 1092 | 44 | 1118 | 82 | 2083 | 3 | 76 | 3 | 76 | 22 | 559 | 45 | 1143 | 8 | 203 | 6175 | 2801 |

*Only available with NPT connection.

All dimensions and weights are approximate.

| | |
|------------------|-------------|
| Job Name _____ | Notes _____ |
| Engineer _____ | _____ |
| Contractor _____ | _____ |
| P.O. No. _____ | _____ |
| Sales Rep. _____ | _____ |
| Model No. _____ | _____ |





AIR SEPARATOR

Tangential Air Separators: 1" - 24" without Strainer ASME

150 PSIG Working Pressure

Construction

| | |
|---------|---------------------|
| Body | ASME Approved Steel |
| Flanges | ASME Class 150 |

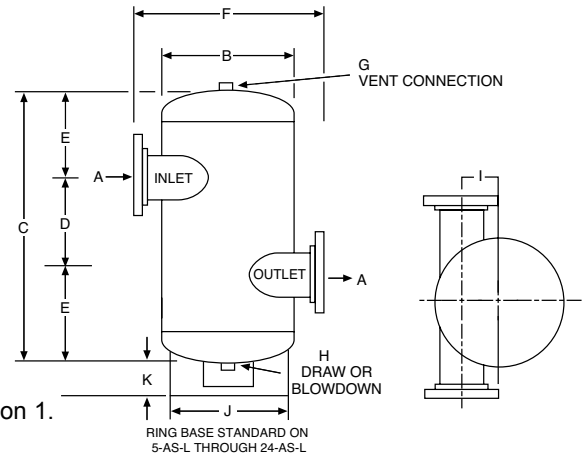
Performance

| | |
|-------------------------------|---------------------|
| Maximum Operating Temperature | 350°F (176.7°C) |
| Maximum Working Pressure | 150 PSIG (10.3 bar) |
| Warranty | 1-Year |

Application

- Creates a low velocity vortex that separates and removes entrained air from circulating water or anti-freeze.

- For use in closed, non-potable water systems.
- Designed and constructed per ASME Code Section VIII, Division 1.



ASME Models

| Model Number | Dimensions | | | | | | | | | | | | | | | | | | | | Shipping Weight | | | |
|--------------|------------|-----|----|------|-----|------|----|------|-----|------|----|------|----|----|----|----|----|-----|-----|------|-----------------|-----|------|------|
| | A | | B | | C | | D | | E | | F | | G | | H | | I | | J | | K | | Lbs | Kg |
| | In | mm | In | mm | In | mm | In | mm | In | mm | In | mm | In | mm | In | mm | In | mm | In | mm | In | mm | | |
| 1-ASL* | 1 | 25 | 4½ | 114 | 12 | 305 | 4 | 102 | 4 | 102 | 7 | 178 | ¾ | 19 | ¾ | 19 | 1⅞ | 33 | - | - | - | - | 15 | 7 |
| 2-ASL | 2 | 51 | 10 | 254 | 23 | 584 | 8 | 203 | 7½ | 191 | 17 | 432 | ¾ | 19 | ¾ | 19 | 3 | 76 | - | - | - | - | 43 | 20 |
| 2½-ASL | 2½ | 64 | 10 | 254 | 23 | 584 | 8 | 203 | 7½ | 191 | 17 | 432 | ¾ | 19 | ¾ | 19 | 3 | 76 | - | - | - | - | 54 | 24 |
| 3-ASL | 3 | 76 | 10 | 254 | 23 | 584 | 8 | 203 | 7½ | 191 | 17 | 432 | ¾ | 19 | ¾ | 19 | 3 | 76 | - | - | - | - | 60 | 27 |
| 4-ASL | 4 | 102 | 12 | 305 | 25 | 635 | 10 | 254 | 7½ | 191 | 21 | 533 | ¾ | 19 | ¾ | 19 | 3½ | 89 | - | - | - | - | 79 | 36 |
| 5-ASL | 5 | 127 | 16 | 406 | 34½ | 876 | 12 | 305 | 11¼ | 286 | 24 | 610 | ¾ | 19 | ¾ | 19 | 4¼ | 108 | 12¾ | 324 | 4⅞ | 117 | 195 | 88 |
| 6-ASL | 6 | 152 | 18 | 457 | 41 | 1041 | 14 | 356 | 13½ | 343 | 26 | 660 | ¾ | 19 | ¾ | 19 | 4¼ | 108 | 14 | 356 | 4⅞ | 117 | 210 | 95 |
| 8-ASL | 8 | 203 | 24 | 610 | 52 | 1321 | 18 | 457 | 17 | 432 | 32 | 813 | ¾ | 19 | ¾ | 19 | 5¼ | 146 | 16 | 406 | 4⅞ | 117 | 400 | 181 |
| 10-ASL | 10 | 254 | 30 | 762 | 58 | 1473 | 21 | 533 | 18½ | 470 | 40 | 1016 | ¾ | 19 | ¾ | 19 | 7¼ | 197 | 24 | 610 | 4⅞ | 117 | 750 | 340 |
| 12-ASL | 12 | 305 | 36 | 914 | 68 | 1727 | 26 | 660 | 21 | 533 | 46 | 1168 | ¾ | 19 | ¾ | 19 | 7¼ | 197 | 30 | 762 | 12⅞ | 321 | 990 | 449 |
| 14-ASL | 14 | 356 | 42 | 1067 | 87 | 2210 | 30 | 762 | 28½ | 724 | 56 | 1422 | ¾ | 19 | ¾ | 19 | 13 | 330 | 30 | 762 | 13⅞ | 340 | 2150 | 975 |
| 16-ASL | 16 | 406 | 48 | 1219 | 90 | 2286 | 32 | 813 | 29 | 737 | 64 | 1626 | 3 | 76 | 3 | 76 | 15 | 381 | 42 | 1067 | 12½ | 318 | 3600 | 1633 |
| 18-ASL | 18 | 457 | 54 | 1372 | 102 | 2591 | 36 | 914 | 33 | 838 | 64 | 1626 | 3 | 76 | 3 | 76 | 16 | 406 | 42 | 1067 | 12⅞ | 314 | 4000 | 1814 |
| 20-ASL | 20 | 508 | 60 | 1524 | 100 | 2540 | 30 | 762 | 35 | 889 | 70 | 1778 | 3 | 76 | 3 | 76 | 19 | 483 | 45 | 1143 | 6⅞ | 176 | 5800 | 2631 |
| 22-ASL | 22 | 559 | 60 | 1524 | 119 | 3023 | 48 | 1219 | 35½ | 902 | 70 | 1778 | 3 | 76 | 3 | 76 | 18 | 457 | 45 | 1143 | 7 | 178 | 6000 | 2722 |
| 24-ASL | 24 | 610 | 72 | 1829 | 131 | 3327 | 43 | 1092 | 44 | 1118 | 82 | 2083 | 3 | 76 | 3 | 76 | 22 | 559 | 45 | 1143 | 8 | 203 | 7000 | 3175 |

*Only available with NPT connection.

All dimensions and weights are approximate.

| | |
|------------------|-------------|
| Job Name _____ | Notes _____ |
| Engineer _____ | _____ |
| Contractor _____ | _____ |
| P.O. No. _____ | _____ |
| Sales Rep. _____ | _____ |
| Model No. _____ | _____ |





AIR SEPARATOR

Tangential Air Separators: 2" - 24" without Strainer ASME

175 PSIG Working Pressure

Construction

| | |
|---------|---------------------|
| Body | ASME Approved Steel |
| Flanges | ASME Class 150 |

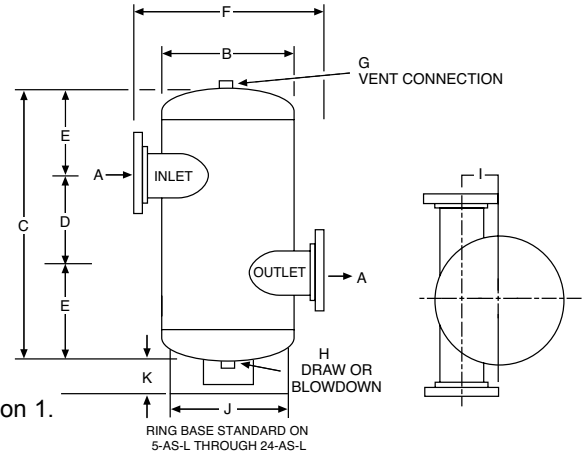
Performance

| | |
|-------------------------------|-------------------|
| Maximum Operating Temperature | 350°F (176.7°C) |
| Maximum Working Pressure | 175 PSIG (12 bar) |
| Warranty | 1-Year |

Application

- Creates a low velocity vortex that separates and removes entrained air from circulating water or anti-freeze.

- For use in closed, non-potable water systems.
- Designed and constructed per ASME Code Section VIII, Division 1.



ASME Models

| Model Number | Dimensions | | | | | | | | | | | Shipping Weight | |
|--------------|------------|----|-----|----|-----|----|----|----|----|-----|-----|-----------------|------|
| | A | B | C | D | E | F | G | H | I | J | K | Lbs | Kg |
| | In | In | In | In | In | In | In | In | In | In | In | | |
| 2-ASL | 2 | 10 | 23 | 8 | 7½ | 17 | ¾ | ¾ | 3 | - | - | 59 | 27 |
| 2½-ASL | 2½ | 10 | 23 | 8 | 7½ | 17 | ¾ | ¾ | 3 | - | - | 70 | 32 |
| 3-ASL | 3 | 10 | 23 | 8 | 7½ | 17 | ¾ | ¾ | 3 | - | - | 80 | 36 |
| 4-ASL | 4 | 12 | 25 | 10 | 7½ | 21 | ¾ | ¾ | 3½ | - | - | 92 | 42 |
| 5-ASL | 5 | 16 | 34½ | 12 | 11¼ | 24 | ¾ | ¾ | 4¼ | 12¼ | 4⅝ | 266 | 121 |
| 6-ASL | 6 | 18 | 41 | 14 | 13½ | 26 | ¾ | ¾ | 4¼ | 14 | 4⅝ | 330 | 150 |
| 8-ASL | 8 | 24 | 52 | 18 | 17 | 32 | ¾ | ¾ | 5¼ | 16 | 4⅝ | 490 | 222 |
| 10-ASL | 10 | 30 | 58 | 21 | 18½ | 40 | ¾ | ¾ | 7¼ | 24 | 4⅝ | 950 | 431 |
| 12-ASL | 12 | 36 | 68 | 26 | 21 | 46 | ¾ | ¾ | 7¼ | 30 | 12⅝ | 1200 | 544 |
| 14-ASL | 14 | 42 | 87 | 30 | 28½ | 56 | ¾ | ¾ | 13 | 30 | 13⅝ | 2800 | 1270 |
| 16-ASL | 16 | 48 | 90 | 32 | 29 | 64 | 3 | 3 | 15 | 42 | 12½ | 4060 | 1842 |
| 18-ASL | 18 | 54 | 102 | 36 | 33 | 64 | 3 | 3 | 16 | 42 | 12⅝ | 4600 | 2087 |
| 20-ASL | 20 | 60 | 100 | 30 | 35 | 70 | 3 | 3 | 19 | 45 | 6⅝ | 6500 | 2948 |
| 22-ASL | 22 | 60 | 119 | 48 | 35½ | 70 | 3 | 3 | 18 | 45 | 7 | 7000 | 3175 |
| 24-ASL | 24 | 72 | 131 | 43 | 44 | 82 | 3 | 3 | 22 | 45 | 8 | 8500 | 3855 |

All dimensions and weights are approximate.

| | |
|------------------|-------------|
| Job Name _____ | Notes _____ |
| Engineer _____ | _____ |
| Contractor _____ | _____ |
| P.O. No. _____ | _____ |
| Sales Rep. _____ | _____ |
| Model No. _____ | _____ |





AIR SEPARATOR

Tangential Air Separators: 2" - 24" without Strainer ASME

250 PSIG Working Pressure

Construction

| | |
|---------|---------------------|
| Body | ASME Approved Steel |
| Flanges | ASME Class 300 |

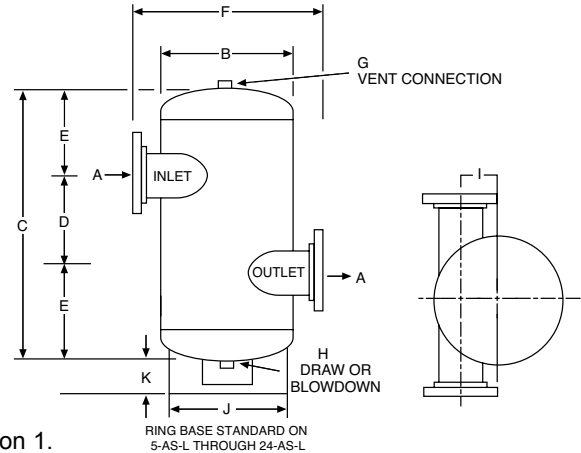
Performance

| | |
|-------------------------------|---------------------|
| Maximum Operating Temperature | 350°F (176.7°C) |
| Maximum Working Pressure | 250 PSIG (17.2 bar) |
| Warranty | 1-Year |

Application

- Creates a low velocity vortex that separates and removes entrained air from circulating water or anti-freeze.

- For use in closed, non-potable water systems.
- Designed and constructed per ASME Code Section VIII, Division 1.



ASME Models

| Model Number | Dimensions | | | | | | | | | | | Shipping Weight | |
|--------------|------------|----|-----|----|-----|----|----|----|----|-----|-----|-----------------|------|
| | A | B | C | D | E | F | G | H | I | J | K | Lbs | Kg |
| | In | In | In | In | In | In | In | In | In | In | In | | |
| 2-ASL | 2 | 10 | 23 | 8 | 7½ | 17 | ¾ | ¾ | 3 | - | - | 65 | 29 |
| 2½-ASL | 2½ | 10 | 23 | 8 | 7½ | 17 | ¾ | ¾ | 3 | - | - | 80 | 36 |
| 3-ASL | 3 | 10 | 23 | 8 | 7½ | 17 | ¾ | ¾ | 3 | - | - | 90 | 41 |
| 4-ASL | 4 | 12 | 25 | 10 | 7½ | 21 | ¾ | ¾ | 3½ | - | - | 105 | 48 |
| 5-ASL | 5 | 16 | 34½ | 12 | 11¼ | 24 | ¾ | ¾ | 4¼ | 12¼ | 4⅝ | 280 | 127 |
| 6-ASL | 6 | 18 | 41 | 14 | 13½ | 26 | ¾ | ¾ | 4¼ | 14 | 4⅝ | 350 | 159 |
| 8-ASL | 8 | 24 | 52 | 18 | 17 | 32 | ¾ | ¾ | 5¾ | 16 | 4⅝ | 560 | 254 |
| 10-ASL | 10 | 30 | 58 | 21 | 18½ | 40 | ¾ | ¾ | 7¼ | 24 | 4⅝ | 1120 | 508 |
| 12-ASL | 12 | 36 | 68 | 26 | 21 | 46 | ¾ | ¾ | 7¼ | 30 | 12⅝ | 1460 | 662 |
| 14-ASL | 14 | 42 | 87 | 30 | 28½ | 56 | ¾ | ¾ | 13 | 30 | 13⅝ | 2965 | 1345 |
| 16-ASL | 16 | 48 | 90 | 32 | 29 | 64 | 3 | 3 | 15 | 42 | 12½ | 4175 | 1894 |
| 18-ASL | 18 | 54 | 102 | 36 | 33 | 64 | 3 | 3 | 16 | 42 | 12⅝ | 5100 | 2313 |
| 20-ASL | 20 | 60 | 100 | 30 | 35 | 70 | 3 | 3 | 19 | 45 | 6⅞ | 7300 | 3311 |
| 22-ASL | 22 | 60 | 119 | 48 | 35½ | 70 | 3 | 3 | 18 | 45 | 7 | 8500 | 3856 |
| 24-ASL | 24 | 72 | 131 | 43 | 44 | 82 | 3 | 3 | 22 | 45 | 8 | 9880 | 4481 |

All dimensions and weights are approximate.

| | |
|------------------|-------------|
| Job Name _____ | Notes _____ |
| Engineer _____ | _____ |
| Contractor _____ | _____ |
| P.O. No. _____ | _____ |
| Sales Rep. _____ | _____ |
| Model No. _____ | _____ |





AIR SEPARATOR

Tangential Air Separators: 2" - 24" without Strainer ASME

300 PSIG Working Pressure

Construction

| | |
|---------|---------------------|
| Body | ASME Approved Steel |
| Flanges | ASME Class 300 |

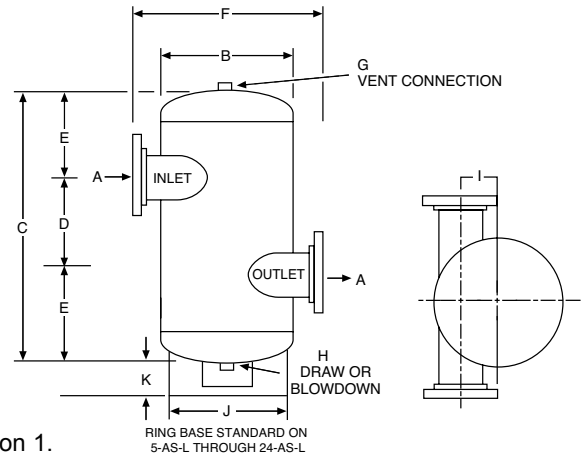
Performance

| | |
|-------------------------------|---------------------|
| Maximum Operating Temperature | 350°F (176.7°C) |
| Maximum Working Pressure | 300 PSIG (20.7 bar) |
| Warranty | 1-Year |

Application

- Creates a low velocity vortex that separates and removes entrained air from circulating water or anti-freeze.

- For use in closed, non-potable water systems.
- Designed and constructed per ASME Code Section VIII, Division 1.



ASME Models

| Model Number | Dimensions | | | | | | | | | | | Shipping Weight | |
|--------------|------------|----|-----|----|-----|----|----|----|----|-----|-----|-----------------|------|
| | A | B | C | D | E | F | G | H | I | J | K | Lbs | Kg |
| | In | In | In | In | In | In | In | In | In | In | In | | |
| 2-ASL | 2 | 10 | 23 | 8 | 7½ | 17 | ¾ | ¾ | 3 | - | - | 74 | 34 |
| 2½-ASL | 2½ | 10 | 23 | 8 | 7½ | 17 | ¾ | ¾ | 3 | - | - | 90 | 41 |
| 3-ASL | 3 | 10 | 23 | 8 | 7½ | 17 | ¾ | ¾ | 3 | - | - | 100 | 45 |
| 4-ASL | 4 | 12 | 25 | 10 | 7½ | 21 | ¾ | ¾ | 3½ | - | - | 118 | 54 |
| 5-ASL | 5 | 16 | 34½ | 12 | 11¼ | 24 | ¾ | ¾ | 4¼ | 12¾ | 4⅝ | 315 | 143 |
| 6-ASL | 6 | 18 | 41 | 14 | 13½ | 26 | ¾ | ¾ | 4¼ | 14 | 4⅝ | 400 | 181 |
| 8-ASL | 8 | 24 | 52 | 18 | 17 | 32 | ¾ | ¾ | 5¾ | 16 | 4⅝ | 630 | 286 |
| 10-ASL | 10 | 30 | 58 | 21 | 18½ | 40 | ¾ | ¾ | 7¾ | 24 | 4⅝ | 1260 | 572 |
| 12-ASL | 12 | 36 | 68 | 26 | 21 | 46 | ¾ | ¾ | 7¾ | 30 | 12⅝ | 1640 | 744 |
| 14-ASL | 14 | 42 | 87 | 30 | 28½ | 56 | ¾ | ¾ | 13 | 30 | 13⅝ | 3335 | 1513 |
| 16-ASL | 16 | 48 | 90 | 32 | 29 | 64 | 3 | 3 | 15 | 42 | 12½ | 4700 | 2132 |
| 18-ASL | 18 | 54 | 102 | 36 | 33 | 64 | 3 | 3 | 16 | 42 | 12⅝ | 5400 | 2450 |
| 20-ASL | 20 | 60 | 100 | 30 | 35 | 70 | 3 | 3 | 19 | 45 | 6⅞ | 8200 | 3719 |
| 22-ASL | 22 | 60 | 119 | 48 | 35½ | 70 | 3 | 3 | 18 | 45 | 7 | 9575 | 4343 |
| 24-ASL | 24 | 72 | 131 | 43 | 44 | 82 | 3 | 3 | 22 | 45 | 8 | 11000 | 4990 |

All dimensions and weights are approximate.

| | |
|------------------|-------------|
| Job Name _____ | Notes _____ |
| Engineer _____ | _____ |
| Contractor _____ | _____ |
| P.O. No. _____ | _____ |
| Sales Rep. _____ | _____ |
| Model No. _____ | _____ |

