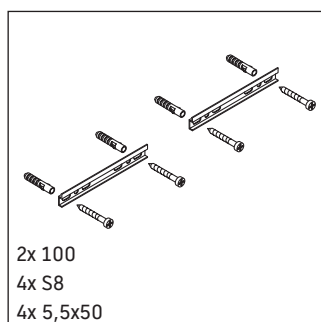
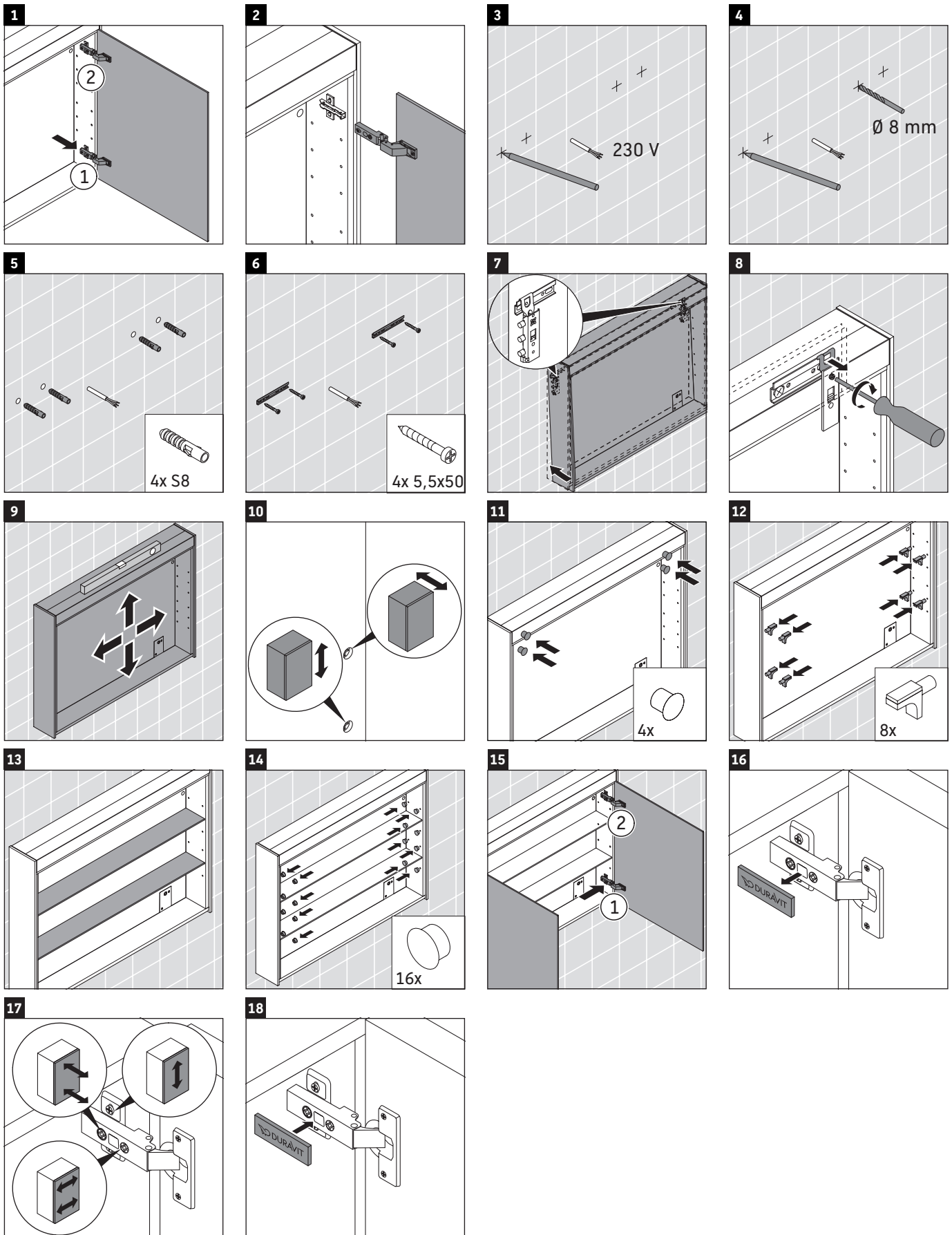


Technical drawing of a rectangular panel with dimensions and a lightning bolt symbol. The overall dimensions are 2030 (height) and 820 (width). The panel features a central dashed rectangle with a lightning bolt symbol inside. Dimensions for the panel and its components are as follows:

- Overall height: 2030
- Overall width: 820
- Top margin: 132
- Top margin offset: 46
- Top margin offset: 74
- Top margin offset: 580
- Top margin offset: 74
- Top margin offset: 46
- Top margin offset: 205
- Top margin offset: 60
- Top margin offset: 276
- Top margin offset: 761
- Top margin offset: 60
- Top margin offset: 820



MAL_Brioso_BR7102/18.01.1



Duravit AG, Werderstr. 36, 78132 Hornberg, Germany, Phone +49 78 33 700, Fax +49 78 33 70 289, info@duravit.de, www.duravit.de

Target readership and qualifications

The electrical installation may only be carried out by qualified electricians.

Protection rating of Duravit products

The protection rating of Duravit products with a power supply complies with the IP 44 standard as a minimum.

Protection class of wall lights

Protection class	Connecting cable
I	H05VV-F, 3x 1.5 mm ²

Standards and directives

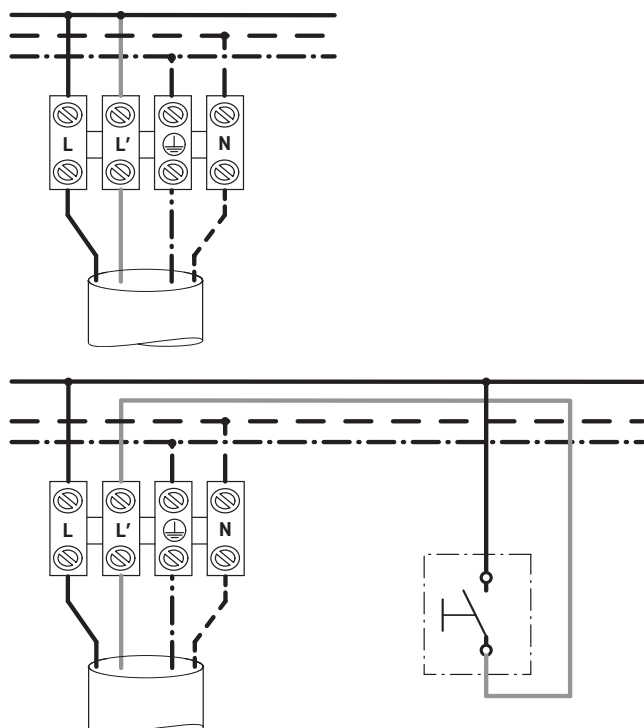
Duravit products comply with the CE marking directives:



Icons and symbols

Symbol	Meaning
>	Action required

Electrical installation for protection class I



Safety instructions

Danger to life

Contact with electricity may lead to an electric shock.

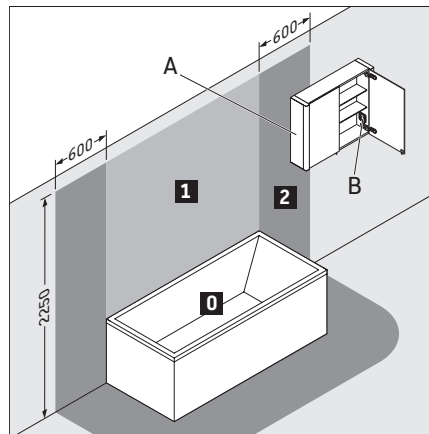
- > Carry out the electrical installation in accordance with the national, European and international directives and standards.
- > Observe protection zones for wet rooms in accordance with country-specific standards, local regulations and low voltage guidelines.
- > Connect the electrics using a ground fault circuit interrupter (GFCI) in wet rooms or other specially equipped rooms.
- > Disconnect electrical components from the power supply before the installation.
- > Check that all components are de-energised.
- > Prevent the power supply from being switched on accidentally.

Penetration of foreign bodies and water

Foreign bodies or water in equipment lead to a short circuit that may cause damage to the product.

- > Observe the protection zones for Duravit products.

Protection zones



- A** A mirror cabinet with an IP 44 rating may protrude into zone 2.
- B** A socket in a mirror cabinet must be mounted outside the zones.